

# NOTICE OF PUBLIC MEETING

GREAT BASIN COLLEGE FOUNDATION  
Board of Trustee Meeting  
1500 College Parkway, Elko, Nevada 89801  
GBC Berg Hall Conference Room  
BlueJeans Dial-in: (888) 240-2560 Meeting ID: 704 647 748

Thursday, February 21, 2019, at 12:15 pm

Video Conference from the Meeting Site to:

GBC – Battle Mt. Center  
835 N. 2<sup>nd</sup> Street  
GBC BM 2  
Battle Mt., NV 89820

GBC – Ely Center  
2115 Bobcat Dr.  
GBC 118  
Ely, NV

GBC – Pahrump Center  
551 E. Calvada Blvd.  
GBC PVC 115  
Pahrump, NV 89048

GBC – Winnemucca Center  
Location unavailable  
Connect via BlueJeans

Members of the public may attend the meeting and provide testimony or public comment at these sites via video conference connection.

## Agenda

### *Call to Order of the Great Basin College Foundation Board of Trustees*

1. Call to Order

2. Roll Call

Tana Gallagher  
Kaley Chapin  
Dr. Robert Colon  
Zachary Gerber

Danny Gillins  
James Glennon  
Gregory Hafen  
Chris Johnson

Mark Laffoon  
Caroline McIntosh  
Angela Prindle  
John Pryor

Dave Roden  
Melissa Schultz  
Holly Wilson

3. Public Comment (*see notation regarding public comment*)

4. Approval of proposed Development Committee Members

5. Athletics

- a. Recommendation from the GBC Development Committee for a request for the GBC Foundation to commit up to a \$50,000 contribution from the Board Designated Endowment for New Programs Fund to match other donor funding sources on a dollar-for-dollar basis for the Fall 2020 women's volleyball program and start-up costs, and which is contingent on full start-up funding of the program by November 30, 2019 and approval by the Board of Regents for GBC to join the Scenic West Athletic Conference.

6. Items from Board Members

7. Public Comment (*see notation regarding public comment*)

8. Adjourn

Information

Action

Possible Action

Information

Information

**This notice and agenda have been posted at or before February 15, 2019, no later than 9:00 am, which is the third business day before the meeting, in accordance with NRS 241.020, at the meeting location and at the following public locations:**

- GBC Foundation's website (<http://www.gbcnv.edu/foundation/index.html>)
- The Nevada Public Notice website pursuant to NRS 232.2175 (<https://notice.nv.gov/>)
- Meeting location: Great Basin College Battle Mt. Center, 832 N. 2<sup>nd</sup>, Battle Mt., NV 89820
- Meeting location: Great Basin College, 1500 College Parkway, Elko, NV 89801
- Meeting location: Great Basin College Ely Center, 2115 Bobcat Drive, Ely, NV 89301
- Great Basin College Pahrump Valley Center, 551 E. Calvada Boulevard, Pahrump, NV 89048
- Great Basin College Winnemucca Center, 5490 Kluncy Canyon Road, Winnemucca, NV 89445

## **IMPORTANT INFORMATION ABOUT THE AGENDA AND PUBLIC MEETING**

GBC Foundation

Board of Trustees Meeting

Date

**NOTE:** Above is an agenda of all items scheduled to be considered. Notification is hereby provided that items on the agenda may be taken out of order and presented, two or more agenda items may be combined for consideration, and an agenda item may be removed from the agenda or discussion relating to an item on the agenda may be delayed at any time.

Some agenda items are noted as having accompanying reference material. Reference material may be accessed at the electronic version of the agenda by clicking the reference link associated with a particular item. The agenda and associated reference material may also be accessed on the Internet by Great Basin College Foundation's web page at <http://www.gbcnv.edu/foundation/meetings.html>. To request a copy of supporting documentation please contact Matt McCarty at (775) 753-2260.

Reasonable efforts will be made to assist and accommodate physically disabled person attending the meeting. Please call the GBC Office of the President at (775) 753-2265 in advance so that arrangements may be made.

**PUBLIC COMMENTS:** Public comment will be taken during this agenda item. No action may be taken on a matter raised under this item until the matter is included on an agenda as an item on which action may be taken. Comments will be limited to two minutes per person. Persons making comment will be asked to begin by stating their name for the record and to spell their last name. The Board Chair may elect to allow additional public comment on a specific agenda item when that agenda item is being considered.

In accordance with Attorney General File No. 00-047 (April 27, 2001), as restated in the Attorney General's Open Meeting law Manual, the Board Chair may prohibit comment if the content of that comment is a topic that is not relevant to, or within the authority of, the GBC Foundation Board of Trustees, or if the content is willfully disruptive of the meeting by being irrelevant, repetitious, slanderous, offensive, inflammatory, irrational or amounting to personal attacks or interfering with the rights of other speakers.

Trustees,

Over the next few pages, I have compiled information in response to questions that I have been asked directly or that I anticipate may yet be asked concerning the GBC Athletics Program proposal.

First, I support the GBC Foundation funding GBC Athletics because I believe that Athletics will increase GBC enrollment, bring more people onto campus and contributing to the local economy.

As you know, GBC is facing a budget shortfall. I believe that Athletics will help to fill that shortfall by bringing new students, both student athletes and people that will attend as a direct result of having an Athletics program, to GBC that may not have otherwise attended. These students will generate additional revenues. I am not aware of a single other program that can begin with as large a positive, financial impact, in such a short amount of time, for an amount lower than what is needed for Athletics.

GBC Athletics will bring community members to the Elko campus. Elko is very supportive of high school and extra-curricular sports. There is no reason to believe that GBC Athletics will not receive similar support. Since volleyball will be played on-site, people will come in-person to see our beautiful campus, community pride will grow and the College will generate community support beyond athletics.

Elko supports sports and GBC Athletics will support Elko. Teams, their families and their friends will travel to Elko, which will result in local economic growth. Student athletes and additional students will live in Elko and contribute to the economy as well, both while pursuing their studies and also by adding to the educated workforce should they stay in the area.

I realize that the Foundation has committed a substantial amount to offset the expected budget shortfall and that this additional investment is for an unproven program. However, I feel very strongly that GBC needs to work on growing out of the deficit and cannot depend on the NSHE or the State to solve this problem alone. I believe that Athletics is a fairly quick way to begin, and maintain, sustainability for GBC.

When I visited with President Helens regarding why she is supporting the program, she responded with, "I support GBC Athletics because as part of a needed growth strategy, it will help keep rural Nevada students in rural Nevada after graduation, will help GBC enrollment and the completion rate, and because we have both student and community support".

Anticipated benefits for adding a new Athletics Program to GBC include:

- Boosting new student enrollment at GBC by competing with regional Community Colleges that currently offer Athletics
- Increased campus foot traffic from both students and community members
- Growing community support of GBC, both directly through Athletics and indirectly through exposure to the GBC "brand"
- Fostering healthy activities among the student body
- Providing a positive economic impact to the community
- Meeting the community request for Athletics

Risks could include:

- An unsuccessful Athletic program damaging the GBC "brand"
- Alienating current and/or potential donors who are adamantly against an Athletic program
- Siphoning current donations to the Foundation into the Booster Club

- Reducing current funding, either in appreciation or corpus, that could be used for future needs

The current initial cost (FY19) to start an Athletics program is approximately \$117,000. This would pay for a Women’s Volleyball Team and the respective Athletics Program Administrative costs. Ongoing costs for Volleyball and Administration would average approximately \$242,000 annually over the subsequent 5 years. Adding Men’s and Women’s Soccer would add an approximate cost of \$80,000 prior to the first season (end of one FY) and average approximately \$165,000 annually over the subsequent 5 years. The Case Statement has a more visual breakdown of costs and timelines.

It is anticipated that the Student approved Athletics Fee will generate approximately \$195,000.

Currently, we have received \$1,000, as well as a pledge of \$10,000 over five years beginning immediately. These funds come from two private donors. We are waiting on one corporate donor to reply to a direct request for at least \$10,000 in support. No other donors, either private or corporate, have been directly asked. It is anticipated that at least \$50,000 annually will be raised through the Booster Club, both in private and corporate sponsorships.

The Foundation’s financial situation has not been “current” for at least the past year. Tami Potter has worked diligently to get all monthly reports completed for calendar year 2018 and we now have the clearest picture we have had since I joined the Foundation. In July, when the Trustees were asked to provide up to \$900,000, there were six funds that were suggested as sources. Those funds are outlined below, with current balances today also indicated:

	July 2018	January 2019
DWRF (Appreciation)	\$400,000	\$385,000
Continuing Education (Appreciation)	\$70,000	\$69,000
Endowment for New Programs (Appreciation)	\$700,000	\$700,000
Board Designated Endowment for New Programs (Appreciation)	\$150,000	\$6,500
Operational Reserve	\$100,000	\$100,000
Board Designated Funds	\$17,000	\$17,000

Not counting the DWRF Funds, the total available funds in July were \$1,037,000. Today, that amount is \$892,500.

Additional Foundation funding sources for an Athletics Program could include:

Board Designated Endowment for New Programs (Corpus)	\$621,500
Accumulated interest from CommonFund to be transferred (approx.)	\$100,000

The current total of the Board Designated Endowment for New Programs is approximately \$628,000. The fund has appreciated approximately \$6,500 in value since it was formed around June of 2017. These funds came about as a split from the Donor Designated New Programs, which were restricted and could not be used for the NEH Grant. When the Board agreed to split the funds, into one Donor Designated Fund and another Board Designated Fund, it does not appear that the Board Designated Fund had any type of restrictions placed on it to define New Programs.

I would recommend that we not taken anything from either the DWRF Funds or the previously identified funds for the \$900,000 designation for FY 2020. Enrollment was higher than budgeted for Fall 2018 and so far for Spring 2019 when compared to FY 2017. However, there is not enough data to determine if this trend will continue into future semesters of the next fiscal year(s). If registration fees are higher than currently budgeted for FY 2020, the College may not need to ask the Foundation for the entire

\$900,000. Regarding a future funding gap, the College has a documented plan to fill the remaining shortfall of the 2019-2021 biennial budget with College resources and without assistance from the Foundation.

I propose adding the following to the Special Board of Trustees as an Agenda Item: Request for the GBC Foundation to commit up to a \$50,000 contribution from the Board Designated Endowment for New Programs Fund to match other donor funding sources on a dollar-for-dollar basis for the Fall 2019 women's volleyball program and start-up costs, and which is contingent on the Board of Regent's approval of the GBC sports program and full start-up funding of the program by June 30, 2019.

I am happy to answer any additional questions that you may have. Any questions directed back to me will be consolidated and sent to the entire Board of Trustees.

Thank you,

Matt

# GREAT BASIN COLLEGE ATHLETICS

## CASE STATEMENT



*Great Basin College Athletics supports excellence in both academic pursuits and athletic participation while fostering connections with students, parents, high school coaches, and communities in the Intermountain West.*



# THE STAGE IS SET

Great Basin College (GBC) is committed to the educational success of all its students, including the promotion of a lifetime of physical health and wellness.

The GBC Leadership supports the implementation of Great Basin College Athletics (GBCA) and voted on November 28, 2018, to submit the proposal to the Nevada System of Higher Education (NSHE) Board of Regents.

Women's volleyball and men's and women's soccer will commence this multi-phase strategic plan. GBC will hire Athletics coaches and staff beginning February 2019.

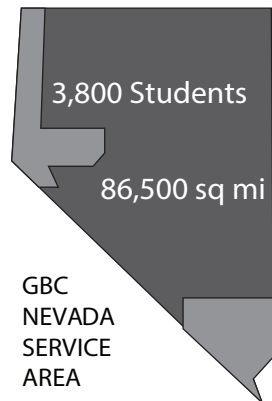
## WE ARE GBC!

GBC offers associate and baccalaureate level instruction in career and technical education and academic areas. About 3,800 students are enrolled online from across the country and on campuses and centers across 86,500 square miles, two time zones, and 10 of Nevada's 17 counties. We border Arizona, Oregon, Idaho, Utah, and California.

GBC's student population is made up of approximately 66% female students and 34% male students.

Of that population, 62% are White, 19.1% are Hispanic, 3.5% are Asian, 2.9% are Native American, 2.5% are Black, 1.1% are Native Hawaiian, 3.1% have two ethnicities or more, and 5.8% are undisclosed.

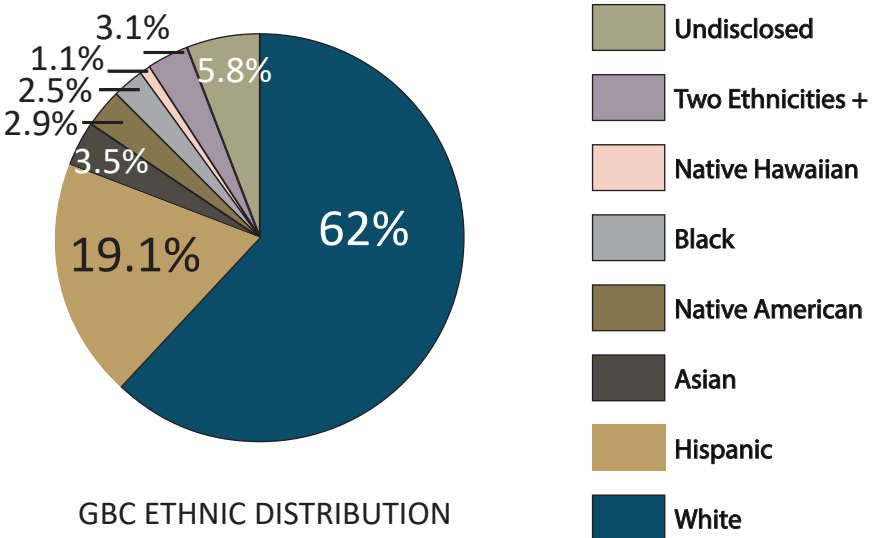
GBC is a major supporter of the mining industry and partners with companies to educate adults of all ages in areas of expressed need. Every year GBC graduates go to work in the mining industry in the Elko area.



## HOMECOURT ADVANTAGE

- GBC’s service area encompasses communities in Northern Nevada that are traditionally underserved and have limited access to wellness amenities
- Students and student-athletes (SAs) leave Nevada to attend colleges where they can participate in, or support, an athletics program
- GBC graduates who remain in the service area have need of health and wellness offerings as well as a strong community identity
- The Elko area is supportive of youth and adult sports and needs another family friendly athletic outlet

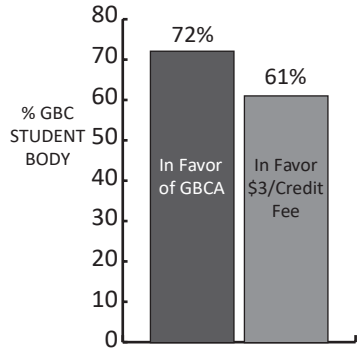
As competition for enrollment increases, GBC must do more to attract, involve, retain, and graduate students by providing a robust collegiate experience. GBC Athletics will promote fitness and athletics across its campuses and communities--investing in education for years to come.





# STEPPING UP TO THE PLATE

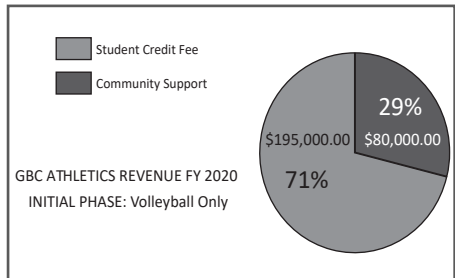
A majority of GBC students support implementation of sports programs at the College. 72% of GBC students surveyed are in favor of a GBC Athletics program; 61% of students are in favor of paying a per credit fee to support an athletics program.



While GBC students are committed to doing their part to support GBC Athletics, the generosity of GBC friends, neighbors, and supporters is crucial to the success of GBC Athletics.

It is estimated there is a need for \$250,000 annually over the next five years. Your gift is a tax deductible donation through the Great Basin College Foundation; commitments of \$10,000 or more may be allocated over a three year pledge period.

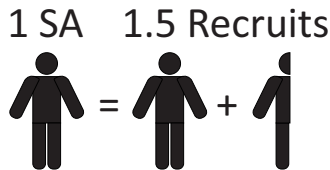
GBC ATHLETICS REVENUE FY 2019-2024  
PHASES I & II: Volleyball & Soccer



## GO BIGHORNS!

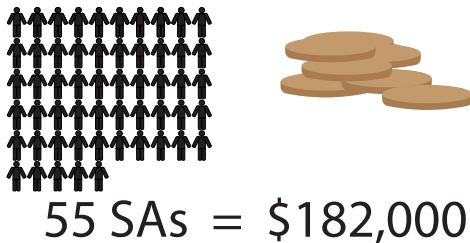
GBC Athletics will boost the student population, revitalize the campus, cater to local interest, and ignite community support and pride in GBC. Increasing campus traffic, thus visibility, will encourage community members to visit GBC campuses and facilities to see GBC students and faculty involved in more than just sports.

Athletics brings a student body together through competition and camaraderie. The GBC community will be part of this “coming together,” and the College can in turn foster long-term relationships with up-and-coming students and student-athletes. Involving potential students and student-athletes at a younger age will increase enrollment at GBC.



### INCREASED ENROLLMENT AND REVENUES:

One and one-half students accompanies every student-athlete to the college of their commitment. 55 student-athletes will generate \$182,000 per year in additional registration fees



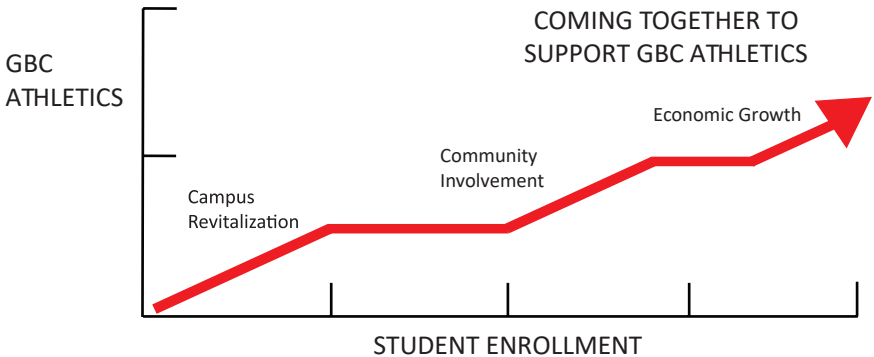
## HEALTHY STUDENTS, HEALTHY COMMUNITIES, HEALTHY ECONOMY

Driving enrollment and graduation numbers up at GBC will directly and positively impact local companies by creating a more educated workforce.

High school graduates, GBC students, and families who choose to remain in the service area to take advantage of an education at GBC will contribute to local economic growth and community stability.

GBC Athletics counts on business sponsorship; in turn, businesses will have local and regional brand exposure—especially as GBC teams travel.

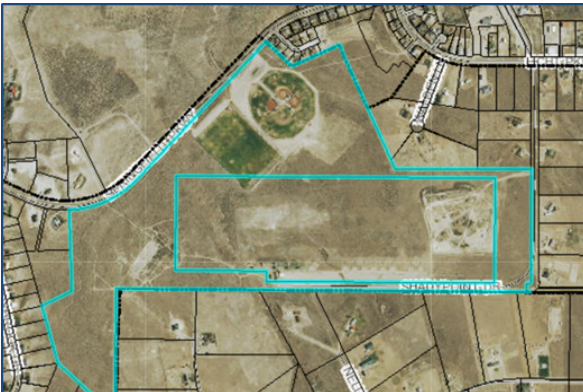
GBC Athletics will bring several visiting athletes, families, and fans to the Elko area right away that will need accommodations and amenities such as hotels, dining, shopping, and tourism. Our associate colleges that currently have athletics programs include: CSI, Twin Falls, ID; TMCC, Sparks/Reno, NV; SLCC, Salt Lake City, UT; Snow College, Ephraim, UT; and USU Eastern, Price, UT.



# LET'S PLAY BALL!

## FACILITIES USE & UPGRADES

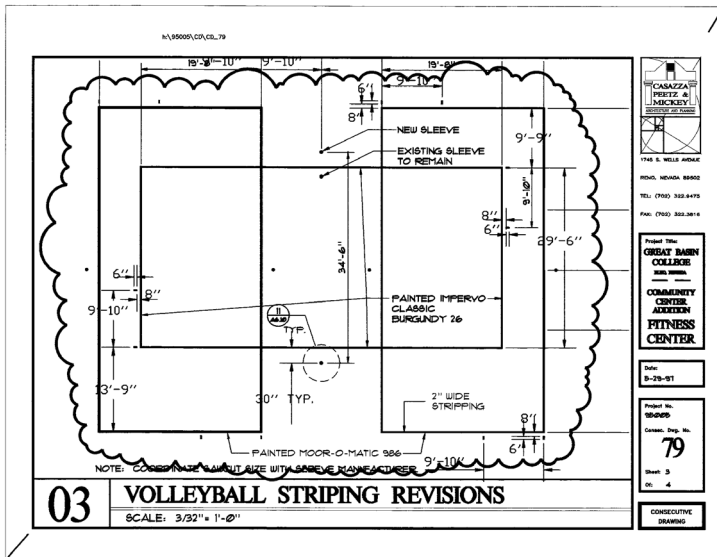
Great Basin College has a gym which is adequate for the volleyball program. The Spring Creek Sports Complex is a centralized location that currently has baseball diamonds, softball fields, and multiple soccer fields which are available for use. The Elko Sports Complex is currently in design to meet the recreational needs of area residents. Both Complex sites have been identified as potential locations for GBC Athletics.



SPRING CREEK SPORTS COMPLEX CONCEPTUAL PLAN



ELKO SPORTS COMPLEX CONCEPTUAL PLAN



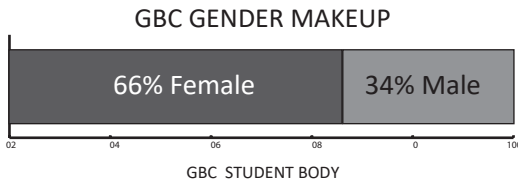
GBC GYM VOLLEYBALL STRIPING REVISIONS CONCEPTUAL PLAN

Therefore, the infrastructure for volleyball, soccer, softball, and baseball is already in place. GBC has met with representatives of the City of Elko regarding the Elko Sports Complex layout design and GBC Athletics' needs. The Spring Creek Complex can be improved as necessary as GBC Athletics' needs grow and resources are secured. The Spring Creek Association and GBC would collaborate on maintenance and landscaping.

## PHASE I & II

### ATHLETIC IMPLEMENTATION

Phase I of Athletics will be implementation of women's volleyball; Phase II will be implementation of men's and women's soccer. These sports correlate to the student body gender makeup: 2:1, female to male, respectively.



### VOLLEYBALL

- Basis: Volleyball is offered at the youth league, junior high, and high school level. Robust adult leagues are in place. GBC Athletics will be on the forefront of area volleyball recruiting as the sports' popularity grows
- Recruitment: Within a 300-350 mile radius of the Elko area with 70% of athletes coming from the immediate area (Battle Mountain, Elko, Ely, Spring Creek, Wells, Wendover, Winnemucca, etc.)
- Venue: GBC gymnasium
- Season: Practice begins August 1, 2019; Preseason Play begins mid-August; Conference Play runs mid-September through October culminating with Conference Championships the first weekend of November and National Championships two weeks later
- Game Plan: The volleyball team will have one head coach and assistant coach(es) as the head coach recommends. Recruiting for this position will be advertised nationally with realistic expectations of hiring someone in the general area on a part time basis



## **SOCCER**

- Basis: Elko residents take great interest in soccer and the area currently has several recreational and competitive soccer programs
- Recruitment: Within a 300-350 mile radius of the Elko area with 70% of athletes coming from the immediate area (Battle Mountain, Elko, Ely, Spring Creek, Wells, Wendover, Winnemucca, etc.)
- Venue: TBD
- Season: Practice begins August 1, 2020; Preseason Play begins mid-August; Conference Play runs September through October culminating with Conference Championships in late October and National Championships in early November
- Game Plan: Initially, there will be a part-time head coach over both the men's and women's teams and an associate coach dedicated to each team. Men's and women's soccer teams travel together so this organizational flow makes sense from a coaching, as well as financial, standpoint



## PHASE III

### BASKETBALL

- Basis: Elko area athletes from elementary to high school level participate in competitive basketball with high schools continually turning out quality teams that are frequently in the running for post-season play in their respective conferences. GBC men's and women's basketball will greatly enhance the student's college experience as basketball is the nation's most visible sport, next to football
- Recruitment: GBC Athletics will give local stand-out athletes a chance to further their education in Elko while competing at the next level of basketball
- Venue: TBD
- Season: Basketball teams would compete in the Scenic West Athletic Conference (SWAC) against schools from Idaho, Utah, Nevada, and Colorado, with the possibility of playing schools from other states in preseason tournament play. Preseason play begins in mid-October and Conference Play begins in early January. Most schools in this conference play between 32-36 games per season; 12 of which are conference games. Regular season play concludes with a Conference Championship held in late February with National Championships following two weeks later
- Game Plan: While basketball is not a sport with which we look to begin our program, it is a sport that can be very successful within the next 5-7 years at GBC





## SOFTBALL

- Basis: Women's fastpitch softball is a growing sport both locally and nationally. The Elko area continues to see growth in this sport at the youth level, as well as more interest being seen at the high school level. Softball is among the top five sports that students want to see at GBC (September 2018 survey)
- Recruitment: GBC Athletics encourages these athletes to continue their passion for softball, as well as complete their education at GBC
- Venue: TBD
- Season: The softball team will compete in the Scenic West Athletic Conference (SWAC) against schools from Idaho, Utah, Nevada, and Colorado, with the possibility of playing schools from other states in preseason tournament and fall play. Softball programs participate in fall non-conference games and begin the regular season in late January. Conference play goes through April concluding with a conference tournament followed by a National Tournament is held in St. George, Utah
- Game Plan: GBC Athletics will add softball to the athletic program within the next 5-7 years



## BASEBALL

- Basis: The Elko area has a rich history of successful teams, and athletes from elementary to high school level participate in competitive baseball. There are a growing number of youth leagues and a greater interest at the high school level than ever before. Additionally, there are several travel teams that compete regionally at a high level
- Venue: TBD
- Recruitment: GBC Athletics encourages these athletes to continue their passion for baseball, as well as complete their education at GBC
- Season: The baseball team will compete in the Scenic West Athletic Conference (SWAC) against schools from Idaho, Utah, Nevada, and Colorado, with the possibility of playing schools from other states in preseason tournament and fall play. Baseball programs participate in fall non-conference games and begin the regular season in late January. Conference play goes through April concluding with a conference tournament followed by a National Tournament held in Grand Junction, Colorado
- Game Plan: GBC Athletics will add baseball to the athletic program within the next 5-7 years



**GREAT BASIN COLLEGE ATHLETICS BUDGETED EXPENDITURES**

<b>VOLLEYBALL</b>	<b>FY19</b>	<b>FY20</b>	<b>FY21</b>	<b>FY22</b>	<b>FY23</b>	<b>FY24</b>
Head Coach Salary	\$16,500	\$33,000	\$33,990	\$35,010	\$36,060	\$37,142
Assistant Coach Salary Pool	\$3,850	\$7,700	\$7,931	\$8,169	\$8,414	\$8,667
Recruiting	\$3,000	\$3,000	\$3,000	\$3,000	\$3,000	\$3,000
Equipment	\$5,000	\$3,060	\$5,202	\$3,184	\$5,412	\$3,312
Uniforms	\$3,500	\$1,020	\$2,040	\$1,592	\$2,122	\$1,656
Officials	\$0	\$5,000	\$5,000	\$5,000	\$5,000	\$5,000
Team Travel	\$0	\$40,000	\$40,000	\$40,000	\$40,000	\$40,000
Game Operations	\$0	\$2,500	\$2,500	\$2,500	\$2,500	\$2,500
	<b>\$31,850</b>	<b>\$95,280</b>	<b>\$99,663</b>	<b>\$98,455</b>	<b>\$102,508</b>	<b>\$101,277</b>
<b>VOLLEYBALL ADMIN/MGMT/ START-UP</b>	<b>FY19</b>	<b>FY20</b>	<b>FY21</b>	<b>FY22</b>	<b>FY23</b>	<b>FY24</b>
Scoreboard	\$15,000	\$0	\$0	\$0	\$0	\$0
Net Systems	\$10,000	\$0	\$0	\$0	\$0	\$0
Water Jugs and Bottles	\$500	\$0	\$0	\$0	\$0	\$0
Sound System	\$15,000	\$0	\$0	\$0	\$0	\$0
Gym/Volleyball Storage	\$10,000	\$0	\$0	\$0	\$0	\$0
	<b>\$50,500</b>	<b>\$0</b>	<b>\$0</b>	<b>\$0</b>	<b>\$0</b>	<b>\$0</b>

**GREAT BASIN COLLEGE ATHLETICS BUDGETED EXPENDITURES**

<b>MEN'S SOCCER</b>	<b>FY19</b>	<b>FY20</b>	<b>FY21</b>	<b>FY22</b>	<b>FY23</b>	<b>FY24</b>
Head Coach Salary	\$0	\$8,250	\$16,500	\$16,995	\$17,505	\$18,030
Assistant Coach Salary Pool	\$0	\$3,850	\$7,700	\$7,931	\$8,169	\$8,414
Recruiting	\$0	\$3,000	\$3,000	\$3,000	\$3,000	\$3,000
Equipment	\$0	\$2,500	\$1,530	\$2,040	\$1,592	\$2,122
Uniforms	\$0	\$5,000	\$1,530	\$2,040	\$1,592	\$2,122
Officials (10 Games)	\$0	\$0	\$6,000	\$6,000	\$6,000	\$6,000
Team Travel	\$0	\$0	\$40,000	\$40,000	\$40,000	\$40,000
Game Operations	\$0	\$0	\$5,000	\$5,000	\$5,000	\$5,000
	<b>\$0</b>	<b>\$22,600</b>	<b>\$81,260</b>	<b>\$83,006</b>	<b>\$82,858</b>	<b>\$84,688</b>
<b>WOMEN'S SOCCER</b>	<b>FY19</b>	<b>FY20</b>	<b>FY21</b>	<b>FY22</b>	<b>FY23</b>	<b>FY24</b>
Head Coach Salary	\$0	\$8,250	\$16,500	\$16,995	\$17,505	\$18,030
Assistant Coach Salary Pool	\$0	\$3,850	\$7,700	\$7,931	\$8,169	\$8,414
Recruiting	\$0	\$3,000	\$3,000	\$3,000	\$3,000	\$3,000
Equipment	\$0	\$2,500	\$1,530	\$2,040	\$1,592	\$2,122
Uniforms	\$0	\$5,000	\$1,530	\$2,040	\$1,592	\$2,122
Officials (10 Games)	\$0	\$0	\$6,000	\$6,000	\$6,000	\$6,000
Team Travel	\$0	\$0	\$40,000	\$40,000	\$40,000	\$40,000
Game Operations	\$0	\$0	\$5,000	\$5,000	\$5,000	\$5,000
	<b>\$0</b>	<b>\$22,600</b>	<b>\$81,260</b>	<b>\$83,006</b>	<b>\$82,858</b>	<b>\$84,688</b>
<b>SOCCER ADMIN/MGMT/ START-UP</b>	<b>FY19</b>	<b>FY20</b>	<b>FY21</b>	<b>FY22</b>	<b>FY23</b>	<b>FY24</b>
Scoreboard with Installation	\$0	\$20,000	\$0	\$0	\$0	\$0
Water Jugs and Bottles	\$0	\$1,000	\$0	\$0	\$0	\$0
Ice Machine	\$0	\$3,000	\$0	\$0	\$0	\$0
Sound System	\$0	\$6,000	\$0	\$0	\$0	\$0
Other Game Operations Supplies	\$0	\$5,000	\$0	\$0	\$0	\$0
	<b>\$0</b>	<b>\$35,000</b>	<b>\$0</b>	<b>\$0</b>	<b>\$0</b>	<b>\$0</b>

<b>GREAT BASIN COLLEGE ATHLETICS BUDGETED EXPENDITURES</b>						
<b>GENERAL ADMINISTRATIVE COSTS</b>	<b>FY19</b>	<b>FY20</b>	<b>FY21</b>	<b>FY22</b>	<b>FY23</b>	<b>FY24</b>
Athletic Director (Part Time)	\$19,250	\$39,655	\$40,845	\$42,070	\$43,332	\$44,631
Administrative Assistant III	\$21,000	\$43,260	\$44,558	\$45,894	\$47,272	\$48,690
Administrative Travel	\$2,000	\$4,000	\$4,000	\$4,000	\$4,000	\$4,000
Administrative Expenses	\$5,000	\$10,000	\$10,000	\$10,000	\$10,000	\$10,000
NJCAA Membership	\$2,500	\$2,500	\$2,500	\$2,500	\$2,500	\$2,500
SWAC Membership	\$400	\$7,100	\$7,100	\$7,100	\$7,100	\$7,100
Side Arm Website (Required)	\$3,000	\$3,000	\$3,000	\$3,000	\$3,000	\$3,000
Stat Crew Software (Required)	\$0	\$400	\$400	\$400	\$400	\$400
Athletic Trainer (Contracted)	\$0	\$5,000	\$5,000	\$5,000	\$5,000	\$5,000
Athletic Trainer Supplies	\$7,500	\$2,000	\$2,040	\$2,101	\$2,164	\$2,230
Sports Information (Contracted)	\$0	\$3,500	\$3,500	\$3,500	\$3,500	\$3,500
Marketing/Promotions	\$3,000	\$3,000	\$3,000	\$3,000	\$3,000	\$3,000
BlueFrame Live Streaming	\$6,000	\$3,000	\$3,000	\$3,000	\$3,000	\$3,000
Misc. (Postage, Office Supplies)	\$3,000	\$3,060	\$3,121	\$3,184	\$3,247	\$3,312
Catastrophic Insurance	\$0	\$6,000	\$6,120	\$6,242	\$6,494	\$6,624
	<b>\$72,650</b>	<b>\$135,475</b>	<b>\$138,184</b>	<b>\$140,991</b>	<b>\$144,009</b>	<b>\$146,987</b>
<b>BUDGET SUMMARY</b>	<b>FY19</b>	<b>FY20</b>	<b>FY21</b>	<b>FY22</b>	<b>FY23</b>	<b>F24</b>
<b>VOLLEYBALL</b>	\$31,850	\$95,280	\$99,663	\$98,455	\$102,508	\$101,277
<b>VOLLEYBALL ADMIN/MGMT/ START-UP</b>	\$50,500	\$0	\$0	\$0	\$0	\$0
<b>MEN'S SOCCER</b>	\$0	\$22,600	\$81,260	\$83,006	\$82,858	\$84,688
<b>WOMEN'S SOCCER</b>	\$0	\$22,600	\$81,260	\$83,006	\$82,858	\$84,688
<b>SOCCER ADMIN/MGMT/ START-UP</b>	\$0	\$35,000	\$0	\$0	\$0	\$0
<b>GENERAL ADMNISISTRATIVE COSTS</b>	\$72,650	\$135,475	\$138,184	\$140,991	\$144,009	\$146,987
<b>TOTAL ATHLETICS EXPENSES</b>	<b>FY19</b>	<b>FY20</b>	<b>FY21</b>	<b>FY22</b>	<b>FY23</b>	<b>F24</b>
	<b>\$155,000</b>	<b>\$230,755</b>	<b>\$237,847</b>	<b>\$239,446</b>	<b>\$246,517</b>	<b>\$248,264</b>

## **DONOR WALL**

Donors pledging \$500 and above will have their names inscribed in the Leonard Center for Student Life donor wall.

Legacy	\$500,000 & Above
Founders	\$250,000 - \$499,999
Pacesetters	\$100,000 - \$249,999
Leaders	\$50,000 - \$99,999
Patrons	\$25,000 - \$49,999
Benefactors	\$10,000 - \$24,999
Fame	\$5,000 - \$9,999
Supporters	\$1,000 - \$4,999
Friends	\$500 - \$999

## **HONORARY RECOGNITION**

A GBC Athletics field or room will be named on behalf of Major Donors, or in honor or in memory of an individual of their choice. Naming opportunities will be discussed while planning the gift.



## **CAMPAIGN LEADERSHIP**

Kaley Chapin	Gregory Hafen II	Angela Prindle
Dr. Robert Colon	Joyce Helens	John Pryor
Tana Gallagher	Chris Johnson	Dave Roden
Zachary Gerber	Mark Laffoon	Melissa Schultz
Danny Gillins	Matt McCarty	Kevin Seipp
James Glennon	Caroline McIntosh	Holly Wilson

## **MAKING A GIFT TO GBC ATHLETICS**

The Great Basin College Foundation cultivates, stewards and manages resources from our communities for the benefit of the students and programs of Great Basin College.

To make a gift to GBC Athletics, please contact Director Matt McCarty of the GBC Foundation at (775) 753-2260 or [matt.mccarty@gbcnv.edu](mailto:matt.mccarty@gbcnv.edu)





Published in partnership with Great Basin College,  
Great Basin College Foundation, and Great Basin College Athletics Task Force

# Great Basin College

INTERCOLLEGIATE ATHLETICS



---

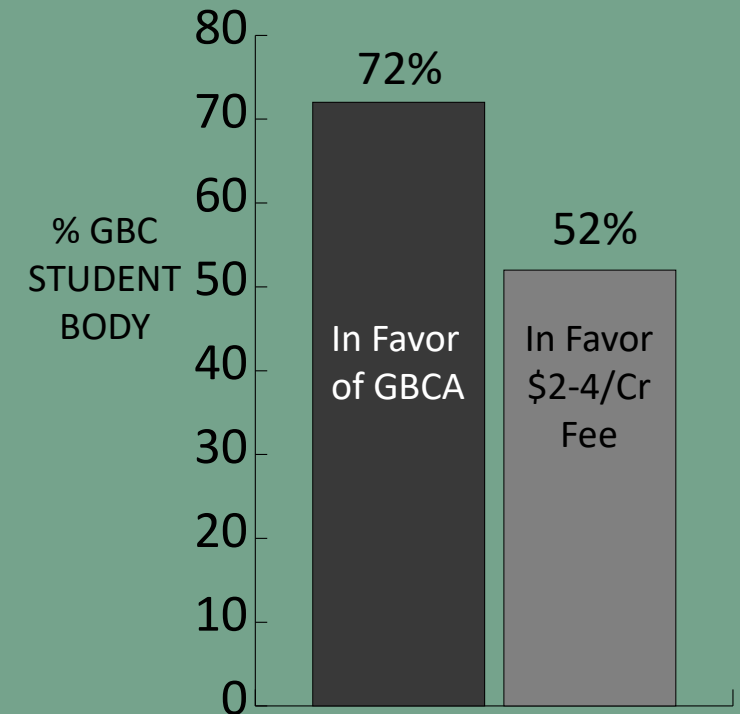
**GBC BIGHORNS**

# Great Basin College's Athletics Task Team

## Why add Athletics at GBC?

- ✓ Keep Nevada students in Nevada post high school graduation
- ✓ Boost collegiate enrollments and completions
- ✓ Increase College and community revenue
- ✓ GBC students support athletics

September 2018 survey showed 72% of students wanted athletics (1439 students; 37.84%); December 2018 survey showed 52% of students willing to pay a fee between \$2-\$4 (961 students; 27.46%)



# Scenic West Athletic Conference Affiliation

- ✓ Sole conference in the NJCAA District 18
- ✓ CSN and TMCC hold membership
- ✓ Competition in Nevada, Idaho, Utah, and Colorado
- ✓ Elite NJCAA conference with exposure for athletes, students, and GBC
- ✓ SWAC emphasizes academics first

# GBC Sports

## Fall 2019 – Women's Volleyball

- ✓ Local and regional programs gaining momentum and recognition
- ✓ Utilize GBC Fitness Center and Gymnasium
- ✓ Low-cost startup with positive impact on student life
- ✓ Scenic West Athletic Conference core sport

# GBC Athletics Funding

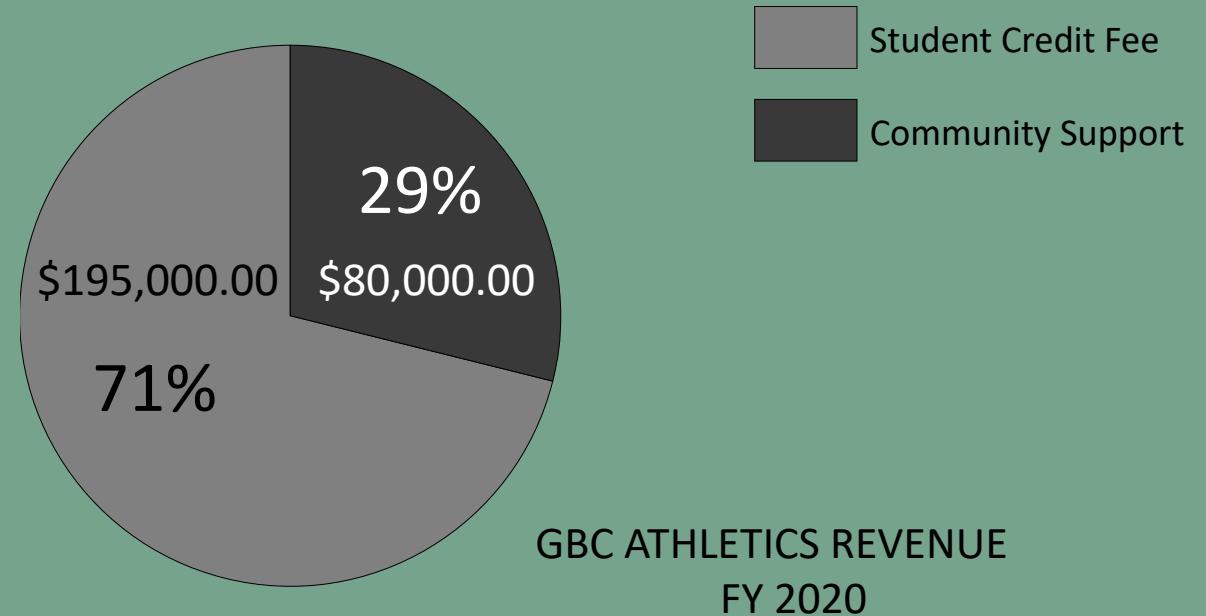
Student Fee - \$3 per credit hour

- ✓ \$195,000 estimated first year (begin Fall 2019)

Institution/Fundraising/

Corporate Sponsors/Booster Club

- ✓ \$127,600 (2019)
- ✓ \$80,000-\$125,000 (2020 and beyond)



# GBC Startup Budget - FY2019

<b>Revenues</b>	
Great Basin College (non-state funds)	27,400
Gifts, Donations	127,600
<b>Total Revenues</b>	<b>155,000</b>
<b>Expenses</b>	
Administrative Costs	72,650
Volleyball (Women's)	82,350
<b>Total Expenses</b>	<b>155,000</b>

# GBC 5-year Athletics Budget

	FY2020	FY2021	FY2022	FY2023	FY2024
<b>Beginning Balance</b>	0	44,245	92,373	150,862	205,250
<b>Revenue</b>					
Student Fees	195,000	195,975	197,935	200,904	204,922
Gifts, Donations	80,000	90,000	100,000	100,000	125,000
<b>Total Revenue</b>	275,000	285,975	297,935	300,904	329,922
<b>Expenses</b>					
Administrative Costs	135,475	138,184	140,991	144,009	146,987
Women's Volleyball	95,280	99,663	98,455	102,508	101,277
<b>Total Expenses</b>	230,755	237,847	239,446	246,517	248,264
<b>Net Increase/Decrease</b>	44,245	48,128	58,489	54,387	81,658
<b>Ending Balance</b>	44,245	92,373	150,862	205,250	286,907



# Future Growth

- ✓ Men's and Women's Soccer
- ✓ Men's and Women's Basketball
- ✓ Baseball
- ✓ Softball
- ✓ Cross Country\*

\*All above mentioned sports are SWAC core sports with the exception of Cross Country

GO BIGHORNS!!

