

**Great Basin College**  
**FACULTY SENATE 2021-2022**  
**Friday, November 19, 2021**  
**9:00am**

Bluejeans link: <https://bluejeans.com/998976516/3114?src=calendarLink>

**AGENDA**

- 1. Roll Call**
- 2. Call to Order**
- 3. Updates from President Helens - REPORT**
- 4. Update from Vice President of BA, Sonja Sibert – NO REPORT**
- 5. Updates from Vice President of AA/SA, Jake Hinton-Rivera - REPORT**
- 6. Senate Chair Report – VERBAL REPORT**
- 7. Approval of October 15, 2021 Minutes - FOR POSSIBLE ACTION**
- 8. Standing Committee Reports:**
  - a. Academic Standards & Assessment.....**WRITTEN REPORT**
  - b. Bylaws.....**WRITTEN REPORT/FOR POSSIBLE ACTION**
  - c. Compensation & Benefits.....**NO REPORT**
  - f. Curriculum Review.....**WRITTEN REPORT**
  - g. Distance Education.....**NO REPORT**
  - h. Gen Ed Committee.....**WRITTEN REPORT**
  - i. Personnel.....**WRITTEN REPORT**
  - j. Strategic Planning, ad hoc.....**NO REPORT**
- 9. Unfinished Business - INFORMATION ONLY**
- 10. New Business:**
  - a. Equipment Request Approval – **FOR POSSIBLE ACTION**
- 11. Information Items:**
  - a. Chancellor Rose complaint – investigation ongoing, no news
- 12. Announcements:**
  - a. Board of Regents Meeting – December 2-3 in Las Vegas, NV
- 13. Good of the Order:**
- 14. Adjournment: ACTION**

**Great Basin College**  
**FACULTY SENATE 2021-2022**  
**Friday, October 15, 2021**  
**9:00am**

**DRAFT MINUTES**

**1. Roll Call**

**Present Voting Representatives:** Alex Kiehn; Jessica Lynch; Justine Stout; Tami Potter; Jinho Jung; Daniel Bergey; Nicholas Cooley; Brandy Nielsen; Ryan Hathaway; Jennifer Steiger; Brian Zeiszler (Proxy); Laurie Walsh (Proxy); Tim Beasley; Eric Walsh; Diane Wrightman; Jason Brick; Madison Arbillaga

**Absent Voting Representatives:** Matt Nichols; Thomas Bruns; Dave Sexton; Lynette McFarlan; Emily Bailey

**Other Members Present:** Michelle Beecher; Susanne Bentley; Jason Brick; Jennifer Brown; Sidnie Creamer; Tawny Crum; Laura Debenham; Swain Hiles; Michelle Husbands; Donald Jones; Jessica Lynch; Lynne Owens; Rita Pujari; Krishina Subedi; Glen Tenney; Milinda Wasala; Geneil White; Michael Whitehead; John Rice; Dean Straight; Xunming Du; Adriana Mendez; Kimberly Noah; Denise Padilla; Oscar Sida; Jennifer Sprout; Gerardo Wence Munoz; Eleanor O'Donnell; Kevin Seipp (Senate Chair)

**Others Present:** President Helens; Vice President Rivera; Gaye Terras; Kelli Baker

**2. Call to Order 9:08 a.m.**

**3. Updates from President Helens – Report**

President Helens reported that the vaccination rate is now over 70%

President Helens discussed the collaboration with UNR, maybe look at an ad hoc committee. Would like to bring this back to committee and have more discussion on it. GBC is a hybrid college and would like to expand on it.

President Helens more information will be sent out for student vaccinations.

**4. Update from Vice President of BA, Sonja Sibert - None**

**5. Updates from Vice President of AA/SA, Jake Hinton-Rivera - Report**

Vice President Rivera reported working on spring enrollment and Admissions and Records are working to make sure students receive sufficient information.

Fall semester is maintain about 12% range. Still trying to get students into late starting classes, but seeing students already enrolled in classes that are dropping out of classes. Please encourage students to not drop.

Moving forward on the strategic plan, it is important for mission and goals for GBC. Surveys will be out fairly soon and looking at having a strategic planning webpage. Base Camp was decided to be used as the project management system. The goal is to use this for other committees to house information in one place. using for tother faculty senate committees so it is housed in one area important info how can we scale across senate committees.

**6. Senate Chair Report:**

Verbal, Written

Kevin Seipp reported the following:

Live classes were back this week.

Student Covid vaccination will be required for Spring 2022 registration. Faculty Covid vaccination is required by December 1, 2021. Vice President Sibert sent an email regarding exemptions that the Board of Regents approved. Any questions ask your supervisor or dean.

President Helens All College meeting was recorded and will be available on website, he will email the link.

The Recruitment Hiring Policy went through the Leadership and Personnel Committees and was approved. The Strategic Plan survey ended October 8<sup>th</sup> and had a great response with about 800 responses, the students had a lot of input on it.

Special meeting of the Board of Regents was canceled and the proposed meeting for next Friday it is postponed, with no reschedule date.

**7. Approval of Minutes: FOR POSSIBLE ACTION**

Brian Zeiszler motioned to approve the meeting minutes of September 17, 2021. Laurie Walsh seconded the motion. Motion passed unanimously.

**8. Standing Committee Reports:**

- a. Academic Standards & Assessment.....No Report
- b. Bylaws.....For Information Only - Written Report
- c. Compensation & Benefits.....For Information Only - Written/Verbal Report

Michelle Husbands reported the following:

The committee reported the following will be brought back in November as action items: Substitute instruction as there is nothing in workload policy, this will be the initial policy with a review in one year; Oversight for student teaching, this is for a student who is hired by the school district as a long-term substitute, this is an additional workload; and the removal of the terminology of telecourses, as they are no longer offered.

The Equitable Option for the online multiplier is still being worked on.

Laurie Walsh commented that Dave Sexton will join this committee.

- f. Curriculum Review.....For Information Only - Written Report
- g. Distance Education.....No Report
- h. Gen Ed Committee.....For Information Only - Written Report
- i. Personnel..... For Information Only - Written/Verbal Report

Justine Stout reported the following:

The Search and Hiring Policy for Professional Staff was finalized in Leadership Council. The committee did not update the wording, it was approved and finalized as rating. They did provide new forms to be used and one of them provides a ranking for each question.

Reminder that tenure applications are due October 28, 2021.

- j. Strategic Planning, ad hoc.....No Report

**9. Unfinished Business: INFORMATION ONLY**

None.

**10. New Business:**

None.

**11. Information Items:**

a. Chancellor Rose complaint

Kevin Seipp said the 23-page complaint is on the internet.

b. Revitalization Task Force Update

Sidnie Creamer: First meeting will be next Monday and to email her any ideas.

Laurie Walsh: Working on uploading each article of the Bylaws to the website. Please go look at your committee's mission.

Kevin Seipp reminded everyone to update their committee webpage to have accurate information.

Tami Potter reminded everyone that equipment requests are due October 28, 2021 and there is \$300,000 available.

**12. Announcements:**

a. Board of Regents Special Meeting cancelled (10/15/2021)

Kevin Seipp reported that today's meeting was cancelled and the next weeks meeting has been postponed.

**13. Good of the Order:**

None.

**14. Adjournment: 9:50 a.m.**

**Academic Standards and Assessment Committee**  
**Meeting Minutes**

Meeting Date: 15 Oct 2021, noon – 1:00 p.m.

Meeting type: BlueJeans meeting

Meeting Facilitator: Susanne Bentley, committee chair

Committee Members Present: Eric Andersen, Dorothy Callander, Stephanie Davis, Sam Lackey, Daniel Murphree, Oscar Sida, Ronald Straight, Glen Tenney, Mike Whitehead.

Ex Officio Members: (not present) Bill Brown, Jennifer Brown, Jake Rivera, Brandis Senecal

Item 1

- The committee reviewed a request for non-traditional credit and determined that the application lacked syllabi for the classes and no explanation of how the non-traditional credit met student learning outcomes. The committee also reviewed the non-traditional credit wording from the 2021-22 GBC Catalog.
- Action: The committee voted unanimously to table the request because no syllabi or explanation of how the non-traditional credit meets the student learning outcomes on syllabi were attached. Susanne will contact the instructor and request detailed information.

Item 2:

- The committee reviewed and discussed changes in the current catalog wording regarding general descriptions for grades. Catalog changes are attached (#2).
- Action: Glen Tenney and Oscar Sida will review the wording and report to the committee at the next meeting.

• Item 3:

- The committee discussed whether to review the GBC student conduct policy on academic dishonesty outlined in the 2021-22 GBC Catalog. Catalog language is attached (#3).
- Action: The committee voted unanimously to request more information from Dean Mary Doucette. Susanne will invite Dean Doucette to the next meeting.

Item 4: The next meeting will be held online at 11 a.m. on Nov. 19, 2021.

Adjournment: The meeting adjourned at 1 p.m.

Attachments:

#1: "How to Obtain Credit for Your Knowledge and Prior Learning Experience Education"

#2: "Grade Descriptions"

#3: "Student Conduct Policy/ Academic Dishonesty"

Respectfully submitted by Susanne Bentley

#### Addendum to October 15 Minutes

On November 4, the instructor who approved the non-traditional credit request that the committee reviewed on October 15 sent additional materials and an explanation of why there were no syllabi attached.

Chair Bentley sent the information to all committee members requesting a vote.

As of November 6, 2021, eight of the ten committee members voted to approve the non-traditional credit request. Two committee members did not vote.

Attendance: Kevin Seipp (Co-chair), Laurie Walsh (Co-chair), Justine Stout, Brian Zeiszler (absent due to prior work commitments)

Bylaws committee met on November 5, 2021 to discuss proposed changes/additions to the Bylaws document.

Please use this document as a reference when looking at the proposed changes to the Bylaws for the November 2021 Faculty Senate meeting and any discussions that you have with colleagues.

- Additions relating to personal conduct and ethics. Please find these additions on pages 2 and 9. The proposed additions are highlighted in **YELLOW**. These additions are proposed for reasons directly related to GBC, but also because of the social climate we live in worldwide.
- Changes in language relating to voting representative responsibilities. Please see the strike thru comments for the current language, and the highlighted caps lock language for the proposed change. These changes can be found on page 8 and are highlighted in **GREEN**. Please note the clause stating that if a voting representative feels they need more time to discuss with the faculty or staff they represent, they do have the ability to table an action item for later consideration.
- Changes and additions relating to Chair duties and meetings. Please see these changes/additions on pages 9 and 18. The changes are highlighted in **BLUE**. These additions are proposed to make sure that the Chair is focused on duties that are pertinent and important to GBC faculty and staff.
- Changes and additions relating to subcommittee formation and their hierarchy. Please see these changes/additions on pages 13, 15, and 16. The changes are highlighted in **GRAY**. Changes to these sections are necessary to make sure that subcommittees understand their role in the larger committee, and so that the chair may have a guideline of how they are to manage meetings of the subcommittee.

These four changes/additions will be brought forward as four separate action items at the Senate meeting on November 19<sup>th</sup>.



# REV Nov 2021 Faculty Senate Bylaws

## Contents of Page

Preamble

Article 1. Name

Article 2. Authority and Functions of the Senate

Article 3. Definitions

Article 4. Membership

Article 5. Senate Officers and Election Procedure

Article 6. Meetings

Article 7. Senate Committees

Article 8. Amendment of the Bylaws

## PREAMBLE

The mission of Great Basin College (GBC) is to enrich people's lives by providing student-centered, post-secondary education to rural Nevada. The college accomplishes this by providing for the educational, cultural and related economic needs of the multi-county service area through programs of university transfer, applied science and technology, business and industry partnerships, developmental education, community service and student support services in conjunction with certificates, associate, and baccalaureate degrees. The mission of GBC is fulfilled by a community of faculty, administrators, staff, and students through a philosophy of shared governance.

The operation of GBC is the joint responsibility of the Nevada System of Higher Education (NSHE) Board of Regents (BOR), the Office of the President of GBC, and the GBC faculty. The responsibilities of faculty at GBC are to provide a learning environment that seeks to preserve, augment, criticize, and transmit knowledge; to develop skills; to foster creative capacities; and to establish the means and opportunity for the community at large to participate in these activities through education and community-based events.

The government of an institution of higher education should be designed to allow faculty to select and carry out their responsibilities with maximum effectiveness and integrity. To insure the orderly development of educational programs and policies, to facilitate communication and cooperation among officers of administration and the faculty, and to promote the stable growth and continued improvement of higher education in the State of Nevada, we, the faculty of Great Basin College, shall govern in accordance with the bylaws herein.

## ARTICLE I: NAME

The organization herein defined shall be known as the *Senate* of GBC. The organization will be referred to as the Senate in these bylaws.

## ARTICLE II: AUTHORITY AND FUNCTIONS OF THE SENATE

Revisions approved at senate February 21, 2020.

### 2.1 AUTHORITY

The authority to form the senate as a recommending body is codified in the Nevada System of Higher Education (NSHE) bylaws and Great Basin College (GBC) institutional bylaws. The senate is organized and functions in accordance with philosophies that embrace academic freedom, faculty welfare, and shared governance.

ALL OFFICERS, MEMBERS OF SENATE, FACULTY AND VISITORS TO SENATE SHALL ENGAGE IN TRANSPARENT, HONEST, PRODUCTIVE, AND CIVIL BEHAVIOR IN ALL SENATE SETTINGS AND COMMUNICATIONS INCLUDING MEETINGS, EMAILS, AND REPORTS (WRITTEN OR ORAL). THESE QUALITIES ARE KEY ELEMENTS TO THE FUNCTIONING OF SENATE.

#### A. NSHE Code Title 2, Chapter 1

**1.4.7 Senates.** All members of the faculty of a member institution shall be represented in each such institution in which they are employed by an entity to be known as the "Senate," or by another entity or entities which may be established in the institutional bylaws, and which shall be organized in conformity with institutional bylaws. All members of the faculty of the Unit shall be represented in one senate to be known as the "Unit senate," and which is to be organized in conformity with the institutional bylaws.

**1.4.8 Senate and Faculty Recommendations.** Actions of the senates may be considered by the faculty in accordance with institutional bylaws. When applicable, the recommendations of the senates, or of the faculty acting on senate actions, concerning general policy on matters of faculty welfare, faculty rights under the Nevada System of Higher Education Code and faculty involvement in the University of Nevada's primary missions shall be transmitted to the Presidents for decision or, if the Board of Regents' approval is needed, for recommendations from the Presidents through the Chancellor to the Board of Regents for the Board's decision.

#### B. GBC BYLAWS

##### 2.0 College Bylaws (GBC)

The Board of Regents delegates to the faculty of GBC the authority and responsibility for organizing itself in accordance with GBC Bylaws and for recommending policy on matters of faculty welfare, on the rights of faculty under the Nevada System of Higher Education Code, and on their involvement in the College's primary missions as stated in the NSHE Code.

##### 3.0 Organizational Structure of Great Basin College, 3.2 College Governance

**3.2.2 Faculty Senate.** These Bylaws authorize the formation of a faculty senate as allowed by NSHE Code, Subsection. 1.4.7. The purpose of the senate is to assure faculty participation in the formation of institutional policies and goals, and the implementation of these policies and goals.

In accordance with the GBC Bylaws and the NSHE Code, the faculty establishes and maintains separate bylaws for their governance.

The faculty senate will make recommendations concerning general policy on matters of faculty welfare, faculty rights under the NSHE Code, and faculty involvement in the Great Basin College mission.

These recommendations will be provided to the president in writing for decision, and, if applicable, on to the Board of Regents. Recommendations that are to be sent to the Board of Regents must first be approved by the president's council (leadership council).

The faculty will be represented at all meetings of the Board of Regents by the chair of the faculty senate or designee. The faculty senate chair will also sit on president's council (leadership council).

The faculty senate will nominate and elect two representatives from the adjunct faculty.

Based on these institutional codes, the GBC senate is authorized to act on items brought before it by faculty and/or those brought forth by executive branches of GBC. Included in, but not limited to, the senate's responsibilities are consideration and recommendation of policies/procedures, plans, guidelines, practices, etc. for the operation of the college. The senate is also tasked with considering issues and concerns that relate to faculty welfare and academic freedom (NSHE Code 2.1.4). The senate has the authority and responsibility to take all appropriate actions that are not in conflict with these bylaws, with the GBC Bylaws, NSHE Code, and the laws and statutes of the State of Nevada and the United States.

Faculty senate bylaws provide the basic tenets for the faculty role in governance. The bylaws committee is a standing committee of the senate that is convened yearly. Membership includes senior administrative and academic faculty who have successfully completed the probationary period (the tenure and mentor processes) with the Senate Vice-Chair serving as chair of the bylaws committee. The bylaws committee has the responsibility of reviewing, revising, and updating these bylaws in accordance with senate procedures described herein.

## **2.2 FUNCTION OF FACULTY SENATE**

The functioning of the senate is predicated on several important perspectives delineated in NSHE code, GBC Bylaws, and these faculty senate bylaws, including, but not limited to the following ideals: academic freedom, faculty welfare, and shared governance. These elements are vital to the functioning of the college and its faculty. Each are briefly discussed here.

### **A. Academic Freedom**

The faculty of GBC embrace the philosophy of academic freedom as it relates to teaching, research, speech, and other matters. NSHE Title 2, Chapter 2 and Title 4, Chapter 1 policies discuss the nature of academic freedom in higher education:

#### **Section 2.1 Declaration of Policy**

**2.1.1 Higher Education and the Common Good.** Institutions of higher education are conducted for the common good and not to further the interest of either the individual member of the faculty or the institution. The continued existence of the common good depends upon the free search for truth and knowledge and their free exposition.

**2.1.2 Academic Freedom.** Academic freedom is essential to these purposes and is applicable to both teaching and research. Freedom in teaching is fundamental for the protection of the rights of the teacher in teaching and of the student in learning. Freedom in research is fundamental to the advancement of truth and knowledge. A member of the faculty has freedom and an obligation, in the classroom or in research, to discuss and pursue the faculty member's subject with candor and integrity, even when the subject requires consideration of topics which may be politically, socially or scientifically controversial. In order to ensure the freedom to seek and profess truth and knowledge, as stated in Section 2.3 of the Nevada System of Higher Education Code, the faculty member, as defined in Section 2.2 of this chapter, shall not be subjected to censorship or discipline by the Nevada System of Higher Education on grounds that the faculty member has expressed opinions or views which are controversial, unpopular or contrary to the attitudes of the Nevada System of Higher Education or the community.

**2.1.3 Academic Responsibility.** The concept of academic freedom is accompanied by the equally demanding concept of academic responsibility. A member of the faculty is responsible for the maintenance of appropriate standards of scholarship and instruction.

**2.1.4 Acts Interfering with Academic Freedom.** The Nevada System of Higher Education is committed to the solution of problems and controversies by the method of rational discussion. Acts of physical force or disruptive acts which interfere with Nevada System of Higher Education activities, freedom of movement on the campuses or freedom for students to pursue their studies are the antithesis of academic freedom and responsibility, as are acts which in effect deny freedom of speech, freedom to be heard and freedom to pursue research of their own choosing to members of the faculty or to invited guests of the Nevada System of Higher Education.

## **NSHE Code Title 4, Chapter 1**

### **Section 38. Freedom of Expression: Aspirational Statement of Values**

The Nevada System of Higher Education (NSHE) and its eight institutions are committed to free and open inquiry in all matters and strive to afford all members of the NSHE community the broadest possible latitude to speak, write, listen, challenge and learn. Except insofar as limitations on that freedom are necessary to the functioning of NSHE and its institutions, NSHE and its institutions fully respect and support the freedom of all its students, faculty, and staff to discuss any topic that presents itself, free of interference. NSHE and its institutions support addressing issues and controversies by the method of open discussion.

The freedom to debate and discuss the merits of ideas is both welcomed and encouraged. The climate of conflict among competing ideas is quite natural and NSHE and its institutions are appropriate spaces for discourse that inspires critical thought and promotes enhanced learning opportunities.

This freedom, however, is not absolute. In narrowly defined circumstances, NSHE and its institutions may lawfully restrict expression and may reasonably regulate the time, place, and manner of expression consistent with First Amendment principles.

NSHE and its institutions are committed to the principle that it may not restrict or suppress debate or deliberation because the ideas put forth are thought to be offensive, unwise, immoral, or misguided. History shows that when institutions of higher education attempt to censor or punish the free expression of ideas, they undermine their core function of promoting rational discussion, inquiry, discovery, and the dissemination of knowledge. It is not the proper response of NSHE and its institutions to attempt to shield individuals from ideas and opinions.

## **B. Faculty Welfare**

1. Faculty welfare (NSHE Title 2, Chapter 1, 1.4.8) is not clearly defined in policy but in general “welfare” relates to economic conditions. The senate considers this element of higher education to relate to faculty individuals and groups, and centers on improving faculty working conditions under the auspices of shared governance and responsibility. While other areas apply, three key areas of faculty welfare are identified as important components that contribute to the furtherance of the college mission.

- a. Improving economic concerns such as salary, workload, insurance, benefits, retirement, evaluation processes, and other matters.
- b. Equity, fairness, and inclusion in hiring, salary, promotion, professional development, participation in governance, representation on task forces, work groups, and the like that are outside of the Senate.
- c. Fairness in the grievance process between members of faculty, between faculty and other administrative groups, and/or between faculty and students.

## **C. Shared Governance**

1. GBC adheres to a philosophy of shared governance that is provided for in NSHE Code and GBC Bylaws, and in a general philosophy of higher education first advocated by the American Association of University Professors 1966 Statement on Government of Colleges and Universities.

2. Shared governance embraces the notion that all perspectives at GBC have value in decision-making and can move the institution forward to meet the challenges of higher education today and in the future. In adhering to the philosophy of shared governance, GBC administration, faculty, and staff contribute to the development and implementation of actions—policies/procedures, plans, and guidelines—for GBC in addition to considering and debating concerns and issues that arise. It is recognized that the free flow of information and perspective is integral to the college and its faculty.

3. Shared governance is reflected in the organization of GBC, including leadership council (LC) and the faculty senate. The development of actions occurs within standing and ad hoc senate committees in consultation with administrative offices, as needed. Committees vote to advance actions to the senate for consideration. The senate may require changes and delay voting until a later date. A simple majority vote in the senate is required to recommend action to LC for further consideration. Actions of the senate shall be reported to the LC by the senate chair. Discussions and actions of LC will be reported back to the senate by the senate chair.

## **2.3 ORGANIZATION**

In order to achieve the missions stated above, two important organizational bodies are important: Leadership Council and the Faculty Senate.

**A. Leadership Council (LC)**

1. Although outside of the senate, Leadership Council is an essential part of shared governance at GBC as indicated in GBC Institutional bylaws (College Governance 3.2.1). This advisory body convenes to discuss matters related to the functioning of the college and considers Senate recommendations and/or issues and concerns. LC may also convene committees as needed to make recommendations related to the college. LC is committed to working with faculty and staff whenever possible and appropriate.
2. The president is the final authority on all actions and matters relating to the operation of GBC. If a presidential decision meets with significant faculty opposition the president may or may not choose to reconsider the matter in consultation with interested parties.
3. Leadership Council membership is determined by the president and may change at her/his discretion.

**Senior Administrative Representation**

1. President
2. Vice presidents
3. Deans
4. Director of Institutional Research
5. Assistant to the president
6. Any other representatives designated by the president

**Faculty Representation**

1. Senate Chair
2. Senate Vice-Chair
3. Past Senate Chair or At-large Faculty

*The out-going Senate Chair may opt-out of this responsibility in which case an at-large faculty member will be elected. At-large faculty members of LC are nominated and approved in Senate by a simple majority.*

4. At-large Administrative Faculty Representative

*Administrative Faculty as a body shall nominate and vote for a representative at the first Senate meeting of the academic year.*

**Classified Staff Representation**

1. Classified Council Chair(s)

**Student Representation**

1. Student Government Association President

**B. Faculty Senate**

1. The senate is formed in accordance with NSHE and GBC Bylaws and is a fundamental in embracing and adhering to the philosophies of academic freedom, faculty welfare, and share governance as detailed above. The senate also seeks to fulfill the mission of GBC and its commitment to higher education. The senate is a recommending body only.

2. A primary function of the senate rests in its involvement with the formation, revision, and implementation of policies/procedures, plans, guidelines and other documents and practices that relate to faculty and the function of GBC. These tasks often are the responsibility of committees. The senate chair may coordinate with LC and faculty to identify potential goals and activities for committees. The senate chair will then present potential goals for each committee at senate. Through the process of debate and consultation, the senate, through simple vote, will decide on the goals of committees. The senate has the authority to reject potential tasks if that body deems the workload as too significant or if other parties are better suited to performing the task.
3. Best practices related to academic freedom, faculty welfare, and shared governance are founded in discussion, consideration, and debate between all parties, but in this case primarily among and between faculty and senior administration. Policies/procedures, plans, guidelines, and other documents that originate in, and are recommended by, senate are vetted by LC and other interested parties at the discretion of the president. LC may adopt, request changes, or not adopt an item originating in senate. The senate has the authority to reject LC requests for changes. An item can thus be adopted by LC that is not recommended by senate.
4. Items originating outside the senate that affect faculty in terms of academic freedom, faculty welfare, and other matters should be vetted through the senate. The senate may request consultation and/or revision of documents and/or practices that impact faculty as detailed in NSHE code and these bylaws. The president retains the right to reject such a request.

### **ARTICLE III: DEFINITIONS**

- *Faculty* are all professional academic and administrative faculty.
- *Executive Faculty* are the President, Vice Presidents and Deans of the college.
- *Code* is the latest version of the Nevada System of Higher Education Code.
- *Part-Time instructors* are temporary academic or administrative faculty who are issued a letter of appointment (LOA) and are employed less than half-time for a period of more than 60 consecutive days or less than twelve months, or more than part-time but less than full-time for a period of more than 60 consecutive days or less than twelve months.
- *Container* is an academic department or administrative unit of GBC as defined by the Executive Committee and approved by Senate.
- *Senator* is a representative selected by container members to participate in Senate.
- *Senate Officers* includes the Senate Chair, Vice Chair, and Secretary.
- *Ex-officio* status means a member of a committee provides input, advice, perspective, and information but is not a voting member of a committee.

### **ARTICLE IV. MEMBERSHIP**

1. All full-time faculty who are not Executive Faculty, Deans, or Letter of Appointment instructors shall be eligible to be voting representatives in the Senate. These representatives are called "senators" in this document.
2. The number of senators from each container shall be one, except those with more than ten members, which shall have two.
3. In each academic year, prior to the first meeting of the Senate, senators will be selected by election within the membership of the container. The term of each senator shall be for one year, with no limit to the number of terms served.

~~4. All officers and senators are uninstructed representatives. It is their responsibility, however, to seek the views and opinions of their unit colleagues and to report back to their unit colleagues. Having exercised such responsibility, the members shall be free to make decision and vote on matters according to their own judgments.~~

**ALL SENATORS ARE VOTING REPRESENTATIVES OF THEIR DEPARTMENTS/UNITS. SENATORS HAVE THE RESPONSIBILITY TO SEEK OPINIONS AND VIEWS FROM MEMBERS OF THEIR DEPARTMENTS/UNIT ON SENATE ACTIVITIES AND ACTION ITEMS. SENATORS VOTE ACCORDING TO THE DOMINANT JUDGEEMENTS OF THEIR DEPARTMENTS/UNTS. IN THE EVENT A SENATOR WOULD LIKE TO SEEK MORE INFORMATION FROM A DEPARTMENT/UNIT IN REGARD AN ACTION ITEM, THEY MAY REQUEST AN ITEM BE TABLED IN ORDER TO PURSUE FURTHER CONSULTATION.**

5. The term of office for faculty senators shall start at the first Senate meeting and end on last Senate meeting of the academic year.
6. With the Senate Chair's prior approval, in the event a senator from a designated Container cannot attend a Senate meeting, that representative shall find an individual from within the container to serve as proxy for that meeting. Senators represented by proxy are considered present for the meeting.
7. The Senate may elect two at-large senators from the part-time instructors. Senators who are part-time instructors shall have full voting rights but shall not hold any Senate office. Candidates may be nominated by any faculty member or by any part-time instructor. Candidates must express a commitment to attend Senate meetings and participate in its affairs. Elections will be held during the first Senate meeting in the fall semester. Terms of office will start October 1 and end at the last meeting of the Senate.
8. In the event a senator is unable to fulfill the duties of office, **OR FAILS TO PROPERLY CONSULT WITH THEIR DEPARTMENT/UNIT**, the container may select another representative.
9. Two absences of a senator without good cause will be considered reason to terminate the term of a senator. The Senate chair will consult with a container to name a replacement. Termination will be reported to appropriate supervisors.
10. The composition of the Senate is subject to change by amendment of these bylaws to accommodate changes in the organization of the faculty.



## ARTICLE V. SENATE OFFICERS AND ELECTION PROCEDURES

Revisions approved at senate 12-18-20

### 5.1. Officers

ALL OFFICERS ELECTED FOR SENATE REPRESENT, SERVE, AND ACT ON BEHALF OF ALL GBC ACADEMIC AND ADMINISTRATIVE FACULTY THROUGH HONEST, TRANSPARENT, UNBIASED, AND CIVIL BEHAVIORS AND DISCOURSE. ALL OFFICERS ARE ACCOUNTABLE TO FACULTY SENATE IN ALL ACTIVITIES.

- A. The officers of Faculty Senate shall be the Senate Chair, Senate Vice Chair, and Parliamentarian, to be placed into office according to the provisions of this article. These officers shall perform the duties prescribed by these bylaws.
- B. The immediate Past Chair is not considered an officer of this organization but serves as an advisory member of Executive Committee.

### 5.2. Duties of Officers

- A. Senate Chair duties:
  1. The Chair's primary duty is to serve and represent the GBC faculty, both administrative and teaching. As the elected representative of the GBC Faculty, she or he presides over the Senate;
    - a. The Senate Chair, upon taking office, will be assigned an administrative assistant to track and circulate committee reports, documents, agendas, and minutes.
    - b. The Senate Chair will be compensated with a \$1,000 per semester stipend as well as a 6-credit release or a commensurate extra stipend for administrative faculty. (see workload policy, section 3.0, B, 3)
  2. The responsibility of the Senate Chair shall be to represent and convey faculty interests and perspectives as they relate to academic freedom, faculty welfare, and shared governance to GBC Administration, NSHE Board of Regents, NSHE Council of Senate Chairs, and any other committees or organizations related to the operations of GBC;
  3. The Senate Chair will attend the following meetings (special and regular) and represent faculty interests at such: Board of Regents, system wide Senate Chairs meeting, Leadership Council, and Executive Team.

ATTENDANCE AT OTHER COLLEGE OR SYSTEM-WIDE MEETINGS IS NOT REQUIRED AND IS DEPENDENT ON RELEVANCE TO FACULTY INTERESTS AND THE ABILITY OF THE CHAIR TO ATTEND GIVEN NORMAL PRIMARY PROFESSIONAL JOB DUTIES AND NORMAL SENATE DUTIES. ADDITIONAL MEETINGS/ACTIVITIES WILL BE APPROVED BY EXECUTIVE COMMITTEE. IF THE SENATE CHAIR IS UNABLE TO ATTEND ADDITIONAL DUTIES, A SUITABLE PROXY WILL BE CHOSEN AT THE DISCRETION OF THE EXECUTIVE COMMITTEE.

- a. The Senate Chair will provide detailed written and verbal reports to faculty of these meetings and any actions taken by these bodies.
    - b. The Senate Chair will ensure that any action taken by these bodies is updated in the Faculty Senate bylaws and GBC policies.
  4. Set the schedule, venue, and agenda for Executive Committee and Faculty Senate meetings. This may include non-senate member presentations that are relevant to faculty interests;
    - a. To ensure consistency and understanding, at the first senate meeting, review the role of the Faculty Senate at GBC, the role of the Senate Chair in representing faculty interests, the role of committees and committee chairs, the role of voting senators, and other matters of process that need to be highlighted.
  5. Assign Senate Committee Chairs in consultation with other faculty and current and/or former Senate Officers in order to identify appropriate leadership;
    - a. Committee Chairs will be selected by the in-coming Senate Chair prior to the first Faculty Senate meeting of the new academic year;
  6. Assign members to Senate committees in consultation with other faculty and current and/or former Senate Officers as needed;
    - a. Committee members will be selected by the in-coming Senate Chair starting the spring prior to their tenure as Chair and will finish assignments by the first faculty senate meeting in September.
    - b. Faculty preferences are considered but are not binding, as service may be required elsewhere.
  7. In consultation with faculty and Executive Committee, assigns tasks to committees and presents these to the full Senate;
  8. Nominate faculty representatives to NSHE committees or other organizations related to the operations of GBC in consultation with the Senate and officers;
  9. And other relevant responsibilities as directed by faculty.
- B. Vice Chair (Chair-elect) duties:
1. The Vice Chair is the presumed in-coming Senate Chair;
  2. The chair-elect shall fulfill all responsibilities of the Senate Chair in the event she/he is unable to do so;
  3. The Vice Chair serves as a member of the Executive Committee and as a member of Leadership Council where she/he will represent faculty interests;
  4. And the Vice Chair shall be the chair of the Bylaws Standing Committee to ensure knowledge of and adherence to these bylaws as well as guiding any changes as needed.
- C. Parliamentarian duties:
1. Serves as the parliamentarian for both Faculty Senate meetings and Executive Committee;
  2. The Parliamentarian will have a working knowledge of *Robert's Rules of Order* and the various governing documents of the Faculty Senate: Senate Bylaws, GBC Bylaws, NSHE Code, etc.;
  3. And the Parliamentarian assures that proper meeting procedures are followed and advises Senate officers and members of such.

### **5.3. Election Procedure**

- A. All faculty eligible to be senators, as defined in Article IV, shall elect from their numbers a Vice Chair by simple majority of those voting;
  - 1. Voting will be done by secret, written or electronic balloting four working days prior to the last regular spring meeting of the Senate;
  - 2. Nominations for the position of Vice Chair shall be opened during the second to last regular meeting of the Senate and shall remain open until the start of the last regular Executive Committee meeting;
    - a. The Executive Committee will close the nominations and prepare ballots for the eligible Faculty to use when voting;
    - b. Executive Committee members running for Senate officer positions will abstain from Executive Committee proceedings in regard to officer elections;
    - c. And the Executive Committee shall close the voting in time to count the ballots and shall announce the election results at the last spring Senate meeting.
- B. A Parliamentarian shall be elected from the Senate membership by the Senate membership at the first Faculty Senate meeting of each academic year.
  - 1. Nominations shall be made at that meeting;
  - 2. And a voice vote or show of hands shall be acceptable.

### **5.4. Terms of Office**

- A. The Chair and Vice Chair shall serve a one-year term;
- B. In the event circumstances warrant, and as determined and approved by a two-thirds majority of the full Senate, terms may be extended for an additional year;
- C. The term for the Chair and Vice Chair is July 1 to June 30;
- D. And the Parliamentarian shall be in office for a term that ends with the election of a new Parliamentarian on the first meeting of the next academic year.

### **5.5. Succession of Officers**

- A. The Vice Chair shall assume the responsibilities of Chair on July 1 or earlier if the Chair vacates the position;
- B. And the announcement of the succession will be made by the out-going Chair at the last regular meeting of the academic year.

### **5.6. Termination of Officers**

- A. A petition to terminate a sitting officer may be brought to the Executive Committee;
  - 1. The petition must be certified as having the signatures of a minimum of 25% of all academic and administrative faculty;
  - 2. The reason for the petition will be argued before the Executive Committee, with the Vice Chair presiding;

3. And if the Executive Committee determines the petition and arguments are valid, the matter will be brought to the Senate for action. The action must be approved by a two-thirds majority of the Senate;
4. And in the event of an officer termination, a special election will be held to replace the officer.

## **ARTICLE VI. MEETINGS**

### **A. Regular and Special Meetings**

1. The regular meetings of the Senate will be held at least once each month throughout the academic year with the time to be the responsibility of the Senate Chair. Special meetings may be called at any time during the calendar year by the Senate Chair, by a majority vote of the Senate, or by any five members of the Senate through petition to the Chair.

2. Regular and special meetings of the Senate are open to all members of the faculty and to visitors, unless a meeting or a portion of a meeting is declared to be in executive session by a vote of the Senate. An executive session is open only to officers, senators, and the executive secretary. If mentioned on the agenda, the Chair allows for a period of public comment, during which visitors are allowed to generate and enter discussion.

### **B. Agenda**

At least three days prior to a regular or special meeting, the Senate Chair will have an agenda published and distributed to the faculty. The agenda will also be posted on the GBC Web Page. In addition to regular agenda items, the Chair must place on the agenda of the next regular meeting all items submitted by petition and signed by at least 10 percent of the faculty, and may place any item on the agenda which has been submitted by any member of the faculty prior to or at the Executive Committee meeting that immediately precedes the Senate meeting. Items intended for information only may be given at the meeting without prior notice if the Senate permits. Action may not be taken on items not on the agenda of a given meeting, but this does not preclude discussion items.

### **C. Order of Business**

1. Welcome and Introductions;
2. Call to Order/Announcement of Quorum;
3. Visiting Speaker(s), if any;
4. Approval of minutes of the previous meeting;
5. Senate Chair Report and Committee Reports;
6. Unfinished Business;
7. New Business;
8. Informational Items, if any;
9. Public Comment, if any; and

## 10. Adjournment.

### **D. Rules**

The Senate is empowered to make rules governing its own internal organization and procedure subject to the following:

1. A majority of Senate members present will constitute a quorum.
2. All actions of the Senate shall be by simple majority of the members present and voting except as specified otherwise in these bylaws.
3. The minutes of Senate meetings shall be distributed regularly to the faculty and the President. Minutes will be posted on the Faculty Senate Web Page. Minutes will also be made available to the members of the public upon request.

The rules contained in the current edition of Robert's Rules of Order shall govern the Senate in all cases to which they are applicable except when the rules are not inconsistent with these bylaws and any special rules of order the Senate may adopt, any regulations GBC or the NSHE BOR may adopt, or any statutes applicable to this organization.

### **ARTICLE VII. SENATE COMMITTEES**

Revisions approved at senate 5-15-20

#### **7.1 Function.**

- A. Senate committees serve to advance the needs of GBC and its mission, its faculty in terms of academic freedom, shared governance, and faculty welfare.
- B. All faculty, with the exception of Executive Faculty and Deans, are expected to perform institutional service. Service, in general, are activities outside one's professional position. Institutional service can involve sitting on at least one approved Senate committee OR other institutional service as approved by their supervisor.
- C. The Senate has two types of committees that are approved by simple majority vote of the Senate.
  1. *Standing* committees are permanent faculty senate committees that have a major role in promoting the mission of the college and its faculty;
  2. *Ad hoc* committees are temporary bodies formed for a specific purpose, a defined time period, and are proposed and approved by the Senate.
    - a. An *ad hoc* committee is automatically dissolved at the end of the timeline, which cannot exceed the current academic year;
    - b. Examples could be equipment awards, library projects, evaluations, etc.
- D. **SUBCOMMITTEES MAY BE FORMED WITHIN STANDING COMMITTEES. THESE ARE TEMPORARY BODIES TASKED WITH A SPECIFIC PURPOSE AND TIME-PERIOD. THE STANDING COMMITTEE CHAIR WILL INFORM THE SENATE OF THE PROPOSED SUBCOMMITTEE, ITS TASK, TIME-PERIOD, AND MEMBERSHIP.**
- E. The Senate has the discretion to both make and to amend its determination of Senate-related committees. Committees that are NOT considered Senate related include, but are not limited to:

3. Department-level committees, tenure committees, committees that exist only due to a specific event/purpose such as special task force committees, scholarship committees, graduation committees, committees that exist for one semester's time or less, advisory boards, and non-college committees;
  4. Task Forces are outside the purview of the faculty senate and are generally originated and approved by administration.
- F. All faculty must perform work on at least one approved Senate committee OR other institutional service approved by their supervisor as part of their workload.
- G. Faculty who receive compensation or work release cannot apply that activity to the service requirement.

## 7.2. Membership on Committees

- A. Committees are composed of a Chair, members of administrative and academic faculty, and *ex-officio* members assigned as needed. Chairs and regular members of committees are voting members while *ex-officio* is not.
- B. Committee service begins with the first Senate meeting of the fall semester and ends with the last meeting during spring semester.
- C. The Senate Chair shall appoint faculty members to standing and *ad hoc* Senate committees after July 1st of a given year but prior to the first Senate meeting of the fall semester. At the end of each spring semester faculty are to identify committee preferences, but appointment to preferred committees is not guaranteed.
- D. The Senate Chair may make assignments to meet the needs of shared governance, academic freedom, faculty welfare, and the institution.
- E. The Senate Chair shall appoint committee chairs, with the agreement of the selected faculty member.
- F. Senate committees may need to include Executive Faculty, students, and/or classified staff. These members shall be non-voting, *ex-officio* members of the committees to which they have been appointed.

## 7.3 Committee Member Duties

- A. Committee Chair
  1. Attend monthly Executive Committee meetings;
  2. Schedule and hold monthly committee meetings;
  3. Lead organizer for duties/activities and take attendance;
  4. Consult with *ex-officio* members in regard to policy and actions;
  5. Coordinate and consult with the Senate Chair, staff, faculty, and/or administration as needed;
  6. Prepare committee reports for each meeting (including date, members present/absent, summary of discussion/activities, actions recommended, etc.);
  7. Submit a monthly, written committee report to the Senate including attendance;

8. Maintain committee webpage (list current members, post minutes/reports, maintain current links to related policies on the GBC Policies and Procedures webpage);
9. Assure committee review and voting for proposed actions/policies;
10. And present actions or other items to the Senate as needed.

**B. Regular Member**

1. Attend monthly meetings;
2. Participate as requested by the committee chair;
3. Facilitate completion of committee tasks;
4. Respond to chair requests for assistance;
5. And vote on actions of the committee.

**C. Ex-Officio**

1. Attend committee meetings as needed (a designee may be appointed);
2. Advise and consult with the committee in regard to policy development and implementation and as needed for other activities/issues;
3. Provide guidance in regard to existing college policy and procedure;
4. Provide additional expertise and perspective;
5. And do not vote on committee actions nor present action items to the Senate.

**7.4 Termination of Chairs and Members**

- A. At the recommendation of the committee chair, any member of a Senate committee who is absent for more than two scheduled meetings may be dismissed from the committee, with the approval of the Senate Chair;
- B. If the committee chair is absent more than two scheduled meetings, the Senate Chair may replace him/her with a new committee chair.
- C. Terminations will be reported to appropriate supervisors by the Senate Chair.

**7.5 Senate Standing Committees**

ALL STANDING COMMITTEE CHAIRS ARE TO REPORT COMMITTEE WORK TO THE SENATE AND THE SENATE CHAIR ON A MONTHLY BASIS. THE PRIMARY DUTIES OF ALL COMMITTEES IS TO COMMUNICATE ACTIVITY TO THE SENATE FOR THE BETTERMENT OF GBC. IT IS UNDERSTOOD THAT SOME COMMITTEES ARE WORKING DIRECTLY WITH ADMINISTRATION OR DEPARTMENTS; THIS WORK MUST ALSO BE REPORTED TO THE FULL SENATE.

- A. All Senate committees will adhere to applicable NSHE Code, GBC Policy and Procedure, state and other relevant policies and codes. The aim of committees is to collaborate with other committees and administration in order to further the mission of GBC. Only standing committees are listed in these bylaws.

B. SUBCOMMITTEES WITHIN STANDING COMMITTEES REPORT TO THE FULL COMMITTEE REGULARLY AS WELL AS THE SENATE. ANY PROPOSED ACTION ITEMS PRODUCED BY A SUBCOMMITTEE ARE FIRST PRESENTED TO THE FULL STANDING COMMITTEE FOR DEBATE AND CONSIDERATION. THE FULL COMMITTEE VOTES ON MOVING ANY SUBCOMMITTEE ACTION ITEMS TO THE SENATE. IN THE EVENT A SUBCOMMITTEE IS FORMED, THE STANDING COMMITTEE CHAIR WILL ADD THE SUBCOMMITTEE AND ITS MEMBERSHIP TO THE COMMITTEE WEBPAGE.

### **1. Academic Standards and Assessment**

Charges:

- a. Review and/or recommend policies on academic standards such as, grading, course or semester forgiveness, and academic dishonesty;
- b. Conduct grade appeals as detailed in GBC Policy;
- c. Provide policy guidance on course and program level student learning outcomes and assessment issues;
- d. Establish and/or review the program evaluation process and results, in conjunction with the appropriate dean;
- e. Evaluate course and program level assessment processes and make recommendations as needed;
- f. Communicate with the appropriate deans in order to coordinate assessment issues;
- g. Review and make recommendations on other topics as assigned by the Faculty Senate Chair, the Faculty Senate Executive Board, or the Faculty Senate Body;
- h. Recommends policies regarding grade appeals, admissions, transfers, and general academic regulations;
- i. Reviews departmental recommendations regarding requests for nontraditional credit;

Composition:

- j. Representation should come from academic faculty with broad participation from programs and departments;
- k. And the Vice President for Student and Academic Affairs or a designee shall be the ex-officio member of this committee.

### **2. Bylaws**

Charges:



- a. Review and recommend bylaw changes in line with NSHE and GBC policy and code;
- b. Review and recommend additions/deletions to the list of standing and *ad hoc* senate committees. A simple majority vote of the Senate is required;
- c. And review and recommend standing committee charges and composition.

Composition:

- d. Faculty Senate Vice Chair will be the chair of this committee;
- e. Two faculty members who are tenured;
- f. And one administrative faculty member with at least 5 years of professional employment at Great Basin College.

### **3. Compensation and Benefits**

Charges:

- a. Reviews and makes recommendations for workload policy;
- b. Recommends distributions of allocated professional development monies;
- c. Makes recommendations on policies and priorities for equity adjustments for faculty;
- d. Members will research and report on issues regarding salary and benefits such as workload equity, health care benefits, retirement, funding for cost of living adjustments (COLAs), salary increases, salary schedules, and maintaining national and regional salary competitiveness;
- e. Makes recommendations on policies regarding compensation related to intellectual property;
- f. Establishes criteria and makes recommendations on the distribution of available merit monies;
- g. Chair is required to serve on any GBC Budget Task Force;
- h. And this committee does not consider grievance issues. Grievance procedures addressing a faculty member's dissatisfaction with an adverse annual evaluation rating or denial of merit can be found in Section 5.9 of the Great Basin College Bylaws.

Composition:

- i. Representation should come from academic and administrative faculty;
- j. The Vice President for Business Affairs or a designee shall be the ex-officio member of this committee.

### **4. Curriculum Review**

Charges:

- a. Review and recommend policy for required course syllabi components including updated policy links;
- b. Reviews syllabi for new courses, regular and approved general education, including recommendations for the required components, organization, and clarity;
- c. Reviews and recommends major requirements of degree and/or certificate program proposals in coordination with the appropriate dean;
- d. Reviews and recommends new degree and/or certificate program proposals in coordination with appropriate dean;
- e. Reviews and recommends the elimination of degree and/or certificate programs in coordination with appropriate dean;
- f. Reviews and recommends program review protocol and reporting requirements for each division, degree and/or certificate program review processes, and reporting in coordination with the appropriate dean;
- g. Reviews and recommends degree and/or certificate program review reports;
- h. And the committee does not conduct administrative tasks such as: pre-requisite changes, credit hour changes, repeatability of a course, NSHE common course numbering, course articulation, etc.

Composition:

- i. Representation should come from academic faculty;
- j. And the Registrar or designee serves as an *ex-officio* member of this committee.

## 5. Executive

Charges:

- a. Orients committee chairs in regard to committee function, duties, and goals for the year;
- b. Meets prior to each senate meeting to set the agenda for that meeting;
- c. Receives status reports from committee chairs or designees;
- d. Receives information related to faculty welfare, shared governance, and academic freedom. Reports this information to the senate and administration as needed;
- e. Recommends the creation and dissolution of senate committees;
- f. And receives petitions and makes recommendations for termination of senate officers and committee chairs.
- g. CONSIDERS AND MAKES RECOMMENDATIONS REGARDING FACULTY SENATE CHAIR DUTIES/MEETINGS, OTHER THAN THOSE REQUIRED AS STATED IN CHAIR DUTIES (see Article 5, section 5.2.3).

Composition:

- h. Senate Chair, Senate Vice Chair, and Secretary.
- i. Committee Chairs or designee.

## 6. General Education

Charges:

- a. Recommends and reviews policies and procedures for lower and upper-division general education objectives and assessment plans in consultation with relevant departments;
- b. Reviews general education syllabi for lower and upper division courses including objectives and assessment plans in consultation with relevant departments;
- c. Reviews and makes recommendations for proposed lower- and upper-division general education (learning objectives and assessment plans) courses in consultation with relevant departments;
- d. Recommendations by the committee for a course are submitted to the appropriate dean. If the dean approves the course for inclusion on the general education grid, the form is submitted by the dean to the Curricular Review committee;
- e. Reviews and makes recommendations for program/certificate learning outcomes and assessment plans in consultation with relevant programs/departments;
- f. Reviews and recommends the removal of general education courses;
- g. Recommended assessment plans for courses and/or programs/certificates are forwarded to the appropriate dean;
- h. And coordinates with the appropriate department and Admissions and Records regarding transfer and articulation issues for general education courses.

Composition:

- i. The majority of members should be academic faculty from departments who teach general education courses;
- j. A few members may come from programs that require general education coursework;
- k. And the Vice President for Student and Academic Affairs or designee serves as an *ex-officio* member of this committee.

## 7. Personnel

Charges:

- a. Receives and reviews tenure and mentor application packets for completeness per policy;
- b. Forwards acceptable tenure/mentor application packets to the appropriate Vice President office;
- c. Receives, reviews and makes recommendations for emeritus status applications;

- d. Receives, reviews and makes recommendations for sabbatical applications;
- e. At least one committee member must serve on all professional search committees;
- f. Recommends representatives for professional search committees who ensure adherence to NSHE and GBC professional search policies; representatives cannot be members of the department conducting the search;
- g. The committee chair will ensure assignments to the professional search committees are evenly distributed amongst personnel committee members;
- h. Reviews and recommends policy pertaining to hiring, tenure, mentoring, sabbatical, emeritus status and other personnel issues;
- i. One or more members would serve on a Special Hearing Committee (BOR Handbook, Title 2, Ch 6.11.3);
- j. This committee does not consider grievance issues. Grievance procedures addressing a faculty member's dissatisfaction with an adverse annual evaluation rating or denial of merit can be found in Section 5.9 of the Great Basin College Bylaws;
- k. And administration and Human Resources will provide guidance and training for the professional search processes, the role of the personnel representative on professional searches, and the reporting of improper employee conduct during professional searches.

Composition:

- l. Broad participation from academic and administrative faculty;
- m. The chair of this committee is a member of the GBC Budget Task Force Committee;
- n. And the Vice-President of Business Affairs or a designee shall be *ex-officio*.

#### **ARTICLE VIII. AMENDMENT OF THE BYLAWS**

The bylaws may be amended by a two-thirds majority of the Senate, provided the amendment has been circulated to the Faculty by the Secretary of the Senate at least one week before it is placed on the agenda. Amendments to these bylaws are subject to Faculty review, and may be vetoed by a majority vote of the total membership of the Faculty. A majority of those present and voting at a Faculty meeting may call for a written ballot of the entire Faculty.

#### **REVISION HISTORY**

**Bylaws Committee 19-20:** Committee Chair Brian Zeiszler, Faculty Senate Chair George Kleeb, Dr. Laurie Walsh, Justine Stout, and Dr. John Rice (fall semester).

**Bylaws Committee 20-21:** Committee Chair Kevin Seipp, Faculty Senate Chair Brian Zeiszler, Dr. Laurie Walsh, and Justine Stout.

## **CURRICULIM REVIEW**

The Curriculum Review Committee met during October and recommended the following new courses for approval:

- HDFS 435A – Child Socialization A Systems Perspective  
Course was previously recommended, but a change to the course number was necessary so it went from HCFS435 to HCFS435A.

Recommended the following course changes:

- RE 101 – Real Estate Principles – change to catalog description
- RE 103 – Real Estate Laws & Principles – change to catalog description

General Education Committee Meeting Notes:

November 8, 2021 at 1PM

The committee met via BlueJeans:

Present: Laurie Walsh, Brandy Nielsen, John Rice, Jason Brick, Nick Cooley, Krishna Subedi, Denise Padilla, Ryan Hathaway, Ethan Hawkley, and Mary Doucette

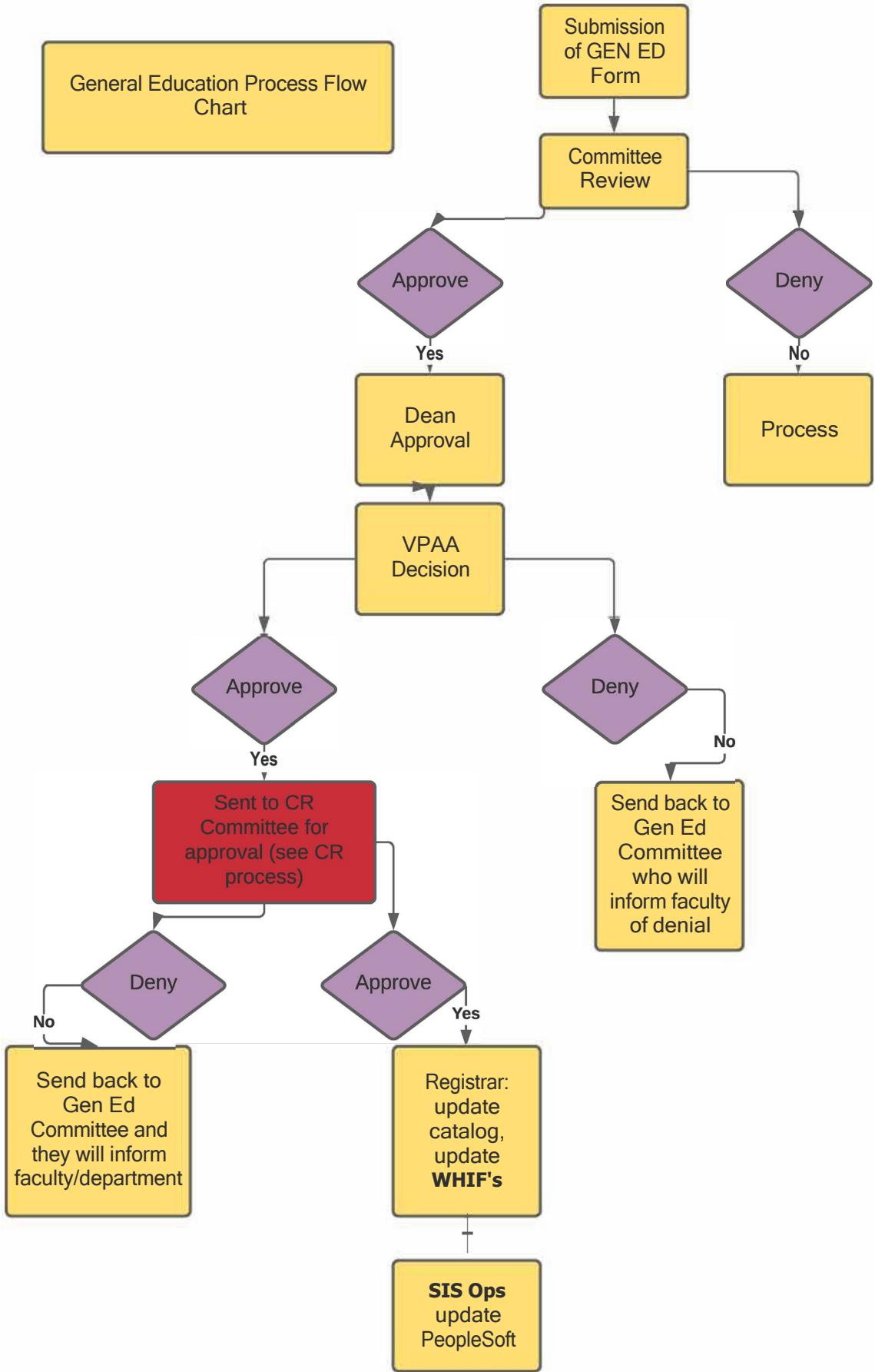
Laurie Walsh and Brandy Nielsen had previously met with Jennifer Brown, Director of Enrollment Services, discussing a flow chart of submissions to the General Education Committee and the General Education Submission Form.

Laurie emailed a copy of the flow chart that Jennifer made to the committee. The committee reviewed the flow chart and it has been added to the General Education web page. A copy is attached to this report.

Laurie and Brandy will be meeting to simplify and edit the current General Education Submission Form. Ryan Hathaway volunteered to help convert the revised submission form into a fillable pdf and/or Word document.

Update from the Strategic Planning Committee: Still very broad, big picture but soon information should be forthcoming.

General Education Process Flow Chart



## Personnel Committee Minutes 10/20/21

- Committee was scheduled to receive training from VP Sibert on do's and don'ts of selection and hiring committee procedures. VP Sibert was unable to attend. Chair briefly went over handouts and answered questions she was able to.
- Committee agreed to break into a smaller subcommittee to tackle updating and reviewing the tenure policy.



**Equipment Awards Advisory Group**  
**November 08, 2021**  
**(Zoom Meeting)**

Attending: Tami Potter (Co-chair), Earl Owen (Co-chair), Dwaine Hiles, Eric Walsh, Meachell Walsh, John Rice and Jessica Lynch  
Absent: Tony Cortes and Todd Padgett

The meeting was focused on review of the 2021-2022 Equipment requests. The deadline for submitting the requests was October 28, 2021. The request had to be approved by the VP's and Deans before the committee could begin the allocation process. This year the committee had \$300,000 to allocate amongst the departments that had made requests. The amount of requests that had been submitted was \$663,380.19. The committee was able to distribute the money pretty evenly over the departments that had made requests. The next step is to present the allocation to Faculty Senate on November 19, 2021. Once approved at Faculty Senate the next step is to go to Leadership Council for approval.

Once Faculty Senate and President's Council approve our recommendations, equipment purchases will begin in January and must be completed by March 31, 2022.

We also talked about organizing a scrap sale in the spring of 2021.

FY22 Equipment Requests		Requested Amount			Awarded Amount		
DEPARTMENT	ITEM	QTY	PRICE	AMOUNT	QTY	PRICE	AMOUNT
Library	Fujitsu ScanSnap SV600 Overhead Book and Document Scanner—Cost 506.99 in Amazon	4	507.00	2,028.00	4.00	507.00	2,028.00
Library	Pad for ScanSnap	4	35.00	140.00	4.00	35.00	140.00
Library	Balt Iteach Mobile Tower, AC Outlet, USB Charge, 13.5' Power Cable	3	355.00	1,065.00	3.00	355.00	1,065.00
Library	Wall Mount Power Strip with 4 Outlet, Mountable Power Strip with 2 USB Ports, 4-Port Under Desk Mount Connect with 6FT Power Cable	16	20.00	320.00	16.00	20.00	320.00
				<b>Library total</b>			<b>3,553.00</b>
Ely Center	HP Color LaserJet Enterprise M652dn and toner	1	2,345.00	2,345.00	1.00	2,345.00	2,345.00
				<b>Ely Center Total</b>			<b>2,345.00</b>
Fitness Center	Dual Channel Wireless Cardioid Lavalier Microphone	2	549.00	1,098.00	2.00	549.00	1,098.00
Fitness Center	Marantz Professional CD/Media/Bluetooth Player	1	249.00	249.00	1.00	249.00	249.00
Fitness Center	Wireless Rackmount 10-Channel Mixer with Bluetooth	1	309.00	309.00	1.00	309.00	309.00
Fitness Center	dbx 231s-Graphic EQ	1	239.00	239.00	1.00	239.00	239.00
				<b>Fitness Center Total</b>			<b>1,895.00</b>
Theatre	Elation Professional Antari S-100X Snow Machine	2	500.00	1,000.00	2.00	500.00	1,000.00
Theatre	•Behringer VP 1220F Professional 2-way 12" floor monitors	4	149.00	596.00	4.00	149.00	596.00
Theatre	Elation Professional Antari Z-350 Fazer	1	400.00	400.00	1.00	400.00	400.00
Theatre	Kopul HDSW-2041-4KI 4x1 HDMI Switcher	1	50.00	50.00	1.00	50.00	50.00
Theatre	Kopul 1/8" Stereo Mini to Dual RCA Y-Cable-6' (1.8m)	1	50.00	50.00	1.00	50.00	50.00
Theatre	Audio-Technica Pro 45 – Cardioid Condenser Hanging Mic	4	99.00	396.00	4.00	99.00	396.00
Theatre	•Audio Technica AT 690 Series ¼" Male to ¼" Male Speaker Cable – 50'	6	29.00	174.00	6.00	29.00	174.00
Theatre	•Switchcraft 318 AudioStix Stereo 1/8" to Mono XR Male Adapter	2	60.00	120.00	2.00	60.00	120.00
Theatre	•Pearson Stereo Mini Male to Stereo Mini Male Cable (black) – 6'	3	3.00	9.00	3.00	3.00	9.00
Theatre	•ChargeWorx Lightning to 3.5mm headphone adapter (White 3")	1	25.00	25.00	1.00	25.00	25.00
Theatre	•Samsung USB Type-C to 3.5mm Headphone Jack Adapter (White)	1	25.00	25.00	1.00	25.00	25.00
Theatre	•20-Volt MAX Lithium-Ion Cordless Drill/Driver combo kit (2-tool) w/ 2 20V MAX batteries; 1.3Ag, Free Reciprocating Saw	2	199.00	398.00	2.00	199.00	398.00
Theatre	•5.5 Amp Corded Jig Saw Kit	2	99.00	198.00	2.00	99.00	198.00
Theatre	•Multi-purpose Steel T-Shank Jig Saw Blade Set for cutting wood and metal (5-pack)	4	9.00	36.00	4.00	9.00	36.00
Theatre	•MAXFIT Driving Bit Set (30 piece) Construction 10 in. 24-tooth Thin Kerf Table saw blade	1	21.00	21.00	1.00	21.00	21.00
Theatre	•40 in. x 26 in. Steel Double Sided Red Standing Menu Chalkboard Sidewalk Sign	1	81.00	81.00	1.00	81.00	81.00
				<b>Theater Total</b>			<b>3,579.00</b>
Pahrump Center	General Room 124	1	25,326.00	25,326.00		25,326.00	-
				<b>Pahrump Center</b>			<b>-</b>
Academic Success and Testing Center	Dell computer - Precision 3650 Tower	1	1,220.00	1,220.00	1.00	1,220.00	1,220.00
				<b>Academic Success Center</b>			<b>1,220.00</b>
Health Sciences	medDispense medication Dispensing System with Cabinet	2	40,000.00	80,000.00	2.00	40,000.00	80,000.00
Health Sciences	necessary sending and receiving IAV equipment for HSHS 102 (Medical Imaging lab)	1	65,309.43	65,309.43		65,309.43	-
				<b>Health Sciences</b>			<b>80,000.00</b>
Instrumentation	Emerson AMS Trex communicator	6	7,232.12	43,392.72	4.00	7,232.12	28,928.48
Instrumentation	Fluke pneumatic handpump	6	703.34	4,220.04	6.00	703.34	4,220.04
				<b>Instrumentation</b>			<b>33,148.52</b>
Welding	Hypertherm Powermax 65 Plasma Cutter	1	3,000.00	3,000.00	1.00	3,000.00	3,000.00
Welding	Miller Dynasty 280DX Gas Tungsten Arc Welder	6	7,500.00	45,000.00	3.00	7,500.00	22,500.00
Welding	Miller XMT 350 Migrunner	5	7,000.00	35,000.00	6.00	7,000.00	42,000.00
Welding	Miller Delta Weld 350 migrunner	5	7,000.00	35,000.00	-	7,000.00	-
				<b>Welding</b>			<b>67,500.00</b>
Diesel	Meter certification and meter cart	1	8,350.00	8,350.00	1.00	8,350.00	8,350.00
Diesel	R 134 ac machines	2	4,500.00	9,000.00	2.00	4,500.00	9,000.00

Diesel	Battery certification and tool cart for certification	1	5,999.00	5,999.00	1.00	5,999.00	5,999.00
Diesel	Precision measurement tools and certification	1	36,399.00	36,399.00	-	36,399.00	-
Diesel	Torque certification and tools	1	45,656.00	45,656.00	-	45,656.00	-
Diesel	Diesel truck	1	51,000.00	51,000.00	-	51,000.00	-
Diesel	Backhoe	1	75,000.00	75,000.00	-	75,000.00	-
			<b>Diesel</b>	<b>231,404.00</b>			<b>23,349.00</b>
Electrical Systems Technology	Dell Laptops	16	2,598.00	41,568.00	16.00	2,598.00	41,568.00
			<b>Electrical Systems Tech</b>	<b>41,568.00</b>			<b>41,568.00</b>
Winnemucca Electrical Systems T	Mobile Precision 5760	16	2,598.00	41,568.00	16.00	2,598.00	41,568.00
			<b>WMCA Electrial Systems Tech</b>	<b>41,568.00</b>			<b>41,568.00</b>
			<b>Total Requests</b>	<b>663,380.19</b>			<b>299,725.52</b>